

A19452

Leader in Biomolecular Solutions for Life Science



# ATP2A3 Rabbit pAb

Catalog No.: A19452

## Basic Information

### Observed MW

128kDa

### Calculated MW

109kDa

### Category

Polyclonal Antibody

### Applications

WB

### Cross-Reactivity

Human

## Background

This gene encodes one of the SERCA Ca(2+)-ATPases, which are intracellular pumps located in the sarcoplasmic or endoplasmic reticula of muscle cells. This enzyme catalyzes the hydrolysis of ATP coupled with the translocation of calcium from the cytosol to the sarcoplasmic reticulum lumen, and is involved in calcium sequestration associated with muscular excitation and contraction. Alternative splicing results in multiple transcript variants encoding different isoforms.

## Recommended Dilutions

WB 1:500 - 1:1000

## Immunogen Information

### Gene ID

489

### Swiss Prot

Q93084

### Immunogen

A synthetic peptide of human ATP2A3

### Synonyms

SERCA3; ATP2A3

## Contact



[www.abclonal.com](http://www.abclonal.com)

## Product Information

### Source

Rabbit

### Isotype

IgG

### Purification

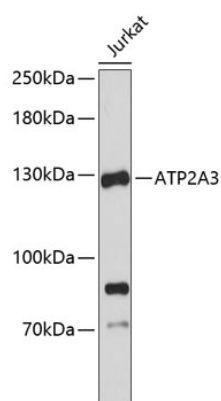
Affinity purification

### Storage

Store at 4°C. Avoid freeze / thaw cycles.  
Buffer: PBS with 0.02% sodium azide, pH7.3.

## Validation Data

---



Western blot analysis of lysates from Jurkat cells, using ATP2A3 Rabbit pAb (A19452).  
Secondary antibody: HRP Goat Anti-Rabbit IgG (H+L) (AS014) at 1:10000 dilution.  
Lysates/proteins: 25µg per lane.  
Blocking buffer: 3% nonfat dry milk in TBST.