

A19420

Leader in Biomolecular Solutions for Life Science



NPPA Rabbit pAb

Catalog No.: A19420

Basic Information

Observed MW

13kDa

Calculated MW

16kDa

Category

Polyclonal Antibody

Applications

WB,FC

Cross-Reactivity

Human,Mouse

Background

The protein encoded by this gene belongs to the natriuretic peptide family. Natriuretic peptides are implicated in the control of extracellular fluid volume and electrolyte homeostasis. This protein is synthesized as a large precursor (containing a signal peptide), which is processed to release a peptide from the N-terminus with similarity to vasoactive peptide, cardiodilatin, and another peptide from the C-terminus with natriuretic-diuretic activity. Mutations in this gene have been associated with atrial fibrillation familial type 6. This gene is located adjacent to another member of the natriuretic family of peptides on chromosome 1.

Recommended Dilutions

WB 1:500 - 1:1000

FC 1:20 - 1:50

Immunogen Information

Gene ID

4878

Swiss Prot

P01160

Immunogen

A synthetic peptide of human NPPA

Synonyms

ANF; ANP; CDD; CDP; PND; ATFB6; ATRST2; CDD-ANF; NPPA

Contact



www.abclonal.com

Product Information

Source

Rabbit

Isotype

IgG

Purification

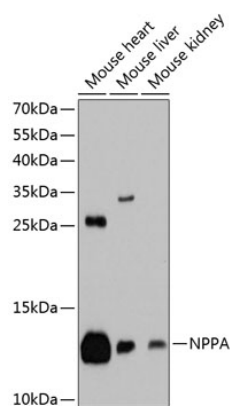
Affinity purification

Storage

Store at 4°C. Avoid freeze / thaw cycles.

Buffer: PBS with 0.02% sodium azide,pH7.3.

Validation Data



Western blot analysis of various lysates using NPPA Rabbit pAb (A19420) at 1:1000 dilution.

Secondary antibody: HRP Goat Anti-Rabbit IgG (H+L) (AS014) at 1:10000 dilution.

Lysates/proteins: 25µg per lane.

Blocking buffer: 3% nonfat dry milk in TBST.

Detection: ECL Basic Kit (RM00020).

Exposure time: 90s.