

A19332

Leader in Biomolecular Solutions for Life Science



# PP2A-B56 $\beta$ /PR61 $\beta$ /PPP2R5B Rabbit pAb

Catalog No.: A19332

## Basic Information

### Observed MW

57kDa

### Calculated MW

57kDa

### Category

Antibody

### Applications

WB,ELISA

### Cross-Reactivity

Rat

## Background

The product of this gene belongs to the phosphatase 2A regulatory subunit B family. Protein phosphatase 2A is one of the four major Ser/Thr phosphatases, and it is implicated in the negative control of cell growth and division. It consists of a common heteromeric core enzyme, which is composed of a catalytic subunit and a constant regulatory subunit, that associates with a variety of regulatory subunits. The B regulatory subunit might modulate substrate selectivity and catalytic activity. This gene encodes a beta isoform of the regulatory subunit B56 subfamily.

## Recommended Dilutions

WB 1:500 - 1:1000

## Immunogen Information

### Gene ID

5526

### Swiss Prot

Q15173

### Immunogen

A synthetic peptide corresponding to a sequence within amino acids 400-497 of human PP2A-B56 $\beta$ /PR61 $\beta$ /PPP2R5B (NP\_006235.1).

### Synonyms

B56B; PR61B; B56beta; PP2A-B56 $\beta$ /PR61 $\beta$ /PPP2R5B

## Contact

 [www.abclonal.com](http://www.abclonal.com)

## Product Information

### Source

Rabbit

### Isotype

IgG

### Purification

Affinity purification

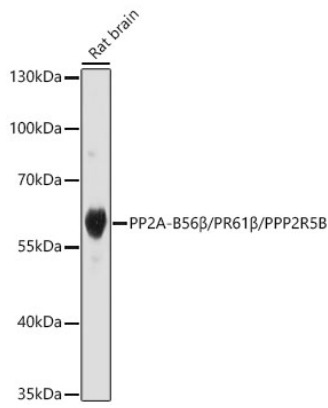
### Storage

Store at -20°C. Avoid freeze / thaw cycles.

Buffer: PBS with 0.01% thimerosal, 50% glycerol, pH7.3.

## Validation Data

---



Western blot analysis of lysates from Rat brain using PP2A-B56β/PR61β/PPP2R5B Rabbit pAb(A19332) at 1:1000 dilution.  
Secondary antibody: HRP Goat Anti-Rabbit IgG (H+L) (AS014) at 1:10000 dilution.  
Lysates/proteins: 25 µg per lane.  
Blocking buffer: 3% nonfat dry milk in TBST.  
Detection: ECL Basic Kit (RM00020).  
Exposure time: 180s.