

A19331

Leader in Biomolecular Solutions for Life Science



## POU4F2 Rabbit pAb

Catalog No.: A19331

### Basic Information

#### Observed MW

Refer to figures

#### Calculated MW

43kDa

#### Category

Polyclonal Antibody

#### Applications

WB,IF/ICC,ELISA

#### Cross-Reactivity

Human,Mouse

### Background

The protein encoded by this gene is a member of the POU-domain transcription factor family and may be involved in maintaining visual system neurons in the retina. The level of the encoded protein is also elevated in a majority of breast cancers, resulting in accelerated tumor growth.

### Recommended Dilutions

**WB** 1:500 - 1:1000

**IF/ICC** 1:50 - 1:200

**ELISA** Recommended starting concentration is 1 µg/mL. Please optimize the concentration based on your specific assay requirements.

### Immunogen Information

#### Gene ID

5458

#### Swiss Prot

Q12837

#### Immunogen

A synthetic peptide corresponding to a sequence within amino acids 1-100 of human POU4F2 (NP\_004566.2).

#### Synonyms

BRN3B; BRN3.2; Brn-3b; POU4F2

### Contact



[www.abclonal.com](http://www.abclonal.com)

### Product Information

#### Source

Rabbit

#### Isotype

IgG

#### Purification

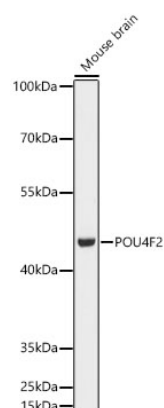
Affinity purification

#### Storage

Store at -20°C. Avoid freeze / thaw cycles.

Buffer: PBS with 0.01% thimerosal, 50% glycerol, pH 7.3.

## Validation Data



Western blot analysis of lysates from Mouse brain, using POU4F2 Rabbit pAb (A19331) at 1:1000 dilution.

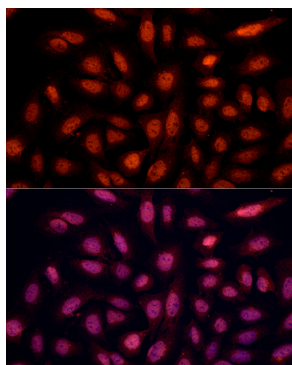
Secondary antibody: HRP-conjugated Goat anti-Rabbit IgG (H+L) (AS014) at 1:10000 dilution.

Lysates/proteins: 25µg per lane.

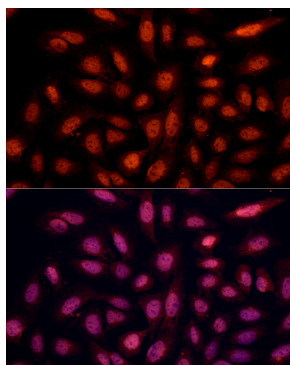
Blocking buffer: 3% nonfat dry milk in TBST.

Detection: ECL Basic Kit (RM00020).

Exposure time: 1s.



Immunofluorescence analysis of U-2 OS cells using POU4F2 Rabbit pAb (A19331) at dilution of 1:100. Secondary antibody: Cy3-conjugated Goat anti-Rabbit IgG (H+L) (AS007) at 1:500 dilution. Blue: DAPI for nuclear staining.



Immunofluorescence analysis of U2OS cells using POU4F2 Rabbit pAb (A19331) at dilution of 1:100 (40x lens). Secondary antibody: Cy3-conjugated Goat anti-Rabbit IgG (H+L) (AS007) at 1:500 dilution. Blue: DAPI for nuclear staining.