

A19287

Leader in Biomolecular Solutions for Life Science



## RCHY1 Rabbit mAb

Catalog No.: A19287

Recombinant

### Basic Information

#### Observed MW

30kDa

#### Calculated MW

30kDa

#### Category

SMab Recombinant Monoclonal  
Antibody

#### Applications

WB,ELISA

#### Cross-Reactivity

Human

#### CloneNo number

ARC2469

### Background

The protein encoded by this gene has ubiquitin ligase activity. It mediates E3-dependent ubiquitination and proteasomal degradation of target proteins, including tumor protein 53, histone deacetylase 1, and cyclin-dependent kinase inhibitor 1B, thus regulating their levels and cell cycle progression. Alternatively spliced transcript variants encoding different isoforms have been described for this gene.

### Recommended Dilutions

**WB** 1:500 - 1:1000

**ELISA** Recommended starting concentration is 1 µg/mL. Please optimize the concentration based on your specific assay requirements.

### Immunogen Information

#### Gene ID

25898

#### Swiss Prot

Q96PM5

#### Immunogen

Recombinant fusion protein containing a sequence corresponding to amino acids 160-261 of human RCHY1 (Q96PM5).

#### Synonyms

ZCHY; ARNIP; CHIMP; PIRH2; RNF199; ZNF363; PRO1996; RCHY1

### Contact



[www.abclonal.com](http://www.abclonal.com)

### Product Information

#### Source

Rabbit

#### Isotype

IgG

#### Purification

Affinity purification

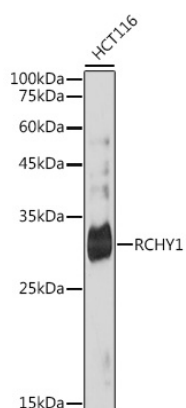
#### Storage

Store at -20°C. Avoid freeze / thaw cycles.

Buffer: PBS with 0.02% sodium azide, 0.05% BSA, 50% glycerol, pH7.3.

## Validation Data

---



Western blot analysis of lysates from HCT116 cells, using RCHY1 Rabbit mAb (A19287) at 1:1000 dilution.

Secondary antibody: HRP-conjugated Goat anti-Rabbit IgG (H+L) (AS014) at 1:10000 dilution.

Lysates/proteins: 25µg per lane.

Blocking buffer: 3% nonfat dry milk in TBST.

Detection: ECL Basic Kit (RM00020).

Exposure time: 180s.