

A19261

Leader in Biomolecular Solutions for Life Science



PITX3 Rabbit mAb

Catalog No.: A19261

Recombinant

1 Publications

Basic Information

Observed MW

35kDa

Calculated MW

32kDa

Category

SMab Recombinant Monoclonal
Antibody

Applications

WB,ELISA

Cross-Reactivity

Human,Mouse,Rat

CloneNo number

ARC2429

Background

This gene encodes a member of the RIEG/PITX homeobox family, which is in the bicoid class of homeodomain proteins. Members of this family act as transcription factors. This protein is involved in lens formation during eye development. Mutations of this gene have been associated with anterior segment mesenchymal dysgenesis and congenital cataracts.

Recommended Dilutions

WB 1:500 - 1:1000

Immunogen Information

Gene ID

5309

Swiss Prot

O75364

Immunogen

A synthetic peptide corresponding to a sequence within amino acids 1-100 of human PITX3 (O75364).

Synonyms

ASMD; ASOD; PTX3; ASGD1; CTPP4; CTRCT11; PITX3

Contact



www.abclonal.com

Product Information

Source

Rabbit

Isotype

IgG

Purification

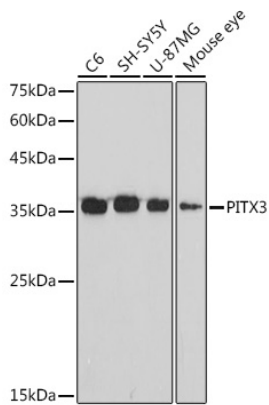
Affinity purification

Storage

Store at -20°C. Avoid freeze / thaw cycles.

Buffer: PBS with 0.02% sodium azide,0.05% BSA,50% glycerol,pH7.3.

Validation Data



Western blot analysis of various lysates using PITX3 Rabbit mAb (A19261) at 1:1000 dilution.
Secondary antibody: HRP Goat Anti-Rabbit IgG (H+L) (AS014) at 1:10000 dilution.
Lysates/proteins: 25µg per lane.
Blocking buffer: 3% nonfat dry milk in TBST.
Detection: ECL Basic Kit (RM00020).
Exposure time: 90s.