

A19236

Leader in Biomolecular Solutions for Life Science



RGAP1 Rabbit mAb

Catalog No.: A19236

Recombinant

2 Publications

Basic Information

Observed MW

71 kDa

Calculated MW

71 kDa

Category

Monoclonal Antibody

Applications

WB,ELISA

Cross-Reactivity

Human

CloneNo number

ARC2394

Background

This gene encodes a GTPase-activating protein (GAP) that is a component of the centralspindlin complex. This protein binds activated forms of Rho GTPases and stimulates GTP hydrolysis, which results in negative regulation of Rho-mediated signals. This protein plays a regulatory role in cytokinesis, cell growth, and differentiation. Alternatively spliced transcript variants have been found for this gene. There is a pseudogene for this gene on chromosome 12.

Recommended Dilutions

WB 1:500 - 1:1000

ELISA Recommended starting concentration is 1 µg/mL. Please optimize the concentration based on your specific assay requirements.

Immunogen Information

Gene ID

29127

Swiss Prot

Q9H0H5

Immunogen

Synthetic peptide. This information is considered to be commercially sensitive.

Synonyms

CYK4; CDAN3B; ID-GAP; HsCYK-4; MgcRacGAP; RGAP1

Contact

 www.abclonal.com

Product Information

Source

Rabbit

Isotype

IgG

Purification

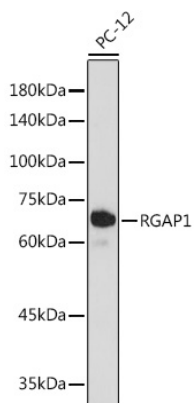
Affinity purification

Storage

Store at -20°C. Avoid freeze / thaw cycles.

Buffer: PBS containing 50% glycerol and 0.05% BSA, preserved with proclin300 or sodium azide (as specified on the Certificate of Analysis), pH 7.3.

Validation Data



Western blot analysis of lysates from PC-12 cells, using RGAP1 Rabbit mAb (A19236) at 1:1000 dilution.

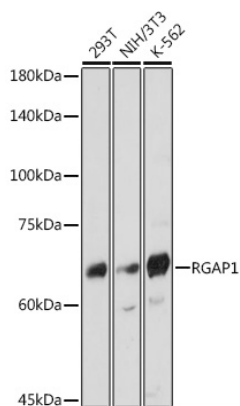
Secondary antibody: HRP-conjugated Goat anti-Rabbit IgG (H+L) (AS014) at 1:10000 dilution.

Lysates/proteins: 25µg per lane.

Blocking buffer: 3% nonfat dry milk in TBST.

Detection: ECL Basic Kit (RM00020).

Exposure time: 180s.



Western blot analysis of various lysates using RGAP1 Rabbit mAb (A19236) at 1:1000 dilution.

Secondary antibody: HRP-conjugated Goat anti-Rabbit IgG (H+L) (AS014) at 1:10000 dilution.

Lysates/proteins: 25µg per lane.

Blocking buffer: 3% nonfat dry milk in TBST.

Detection: ECL Basic Kit (RM00020).

Exposure time: 30s.