

A19225

Leader in Biomolecular Solutions for Life Science



## SUPT5H/SPT5 Rabbit mAb

Catalog No.: A19225

Recombinant

### Basic Information

#### Observed MW

150kDa/

#### Calculated MW

121kDa

#### Category

SMab Recombinant Monoclonal  
Antibody

#### Applications

WB,IHC-P,IF/ICC,IP,ELISA

#### Cross-Reactivity

Human,Mouse,Rat

#### CloneNo number

ARC2380

### Background

Enables enzyme binding activity and protein heterodimerization activity. Involved in positive regulation of macroautophagy; regulation of RNA metabolic process; and transcription elongation from RNA polymerase II promoter. Located in nucleoplasm. Part of DSIF complex.

### Recommended Dilutions

**WB** 1:500 - 1:1000

**IHC-P** 1:50 - 1:200

**IF/ICC** 1:50 - 1:200

**IP** 0.5µg-4µg antibody for  
200µg-400µg extracts  
of whole cells

**ELISA** Recommended starting  
concentration is 1  
µg/mL. Please optimize  
the concentration  
based on your specific  
assay requirements.

### Immunogen Information

#### Gene ID

6829

#### Swiss Prot

O00267

#### Immunogen

Synthetic peptide. This information is considered to be commercially sensitive.

#### Synonyms

SPT5; SPT5H; Tat-CT1; SUPT5H/SPT5

### Product Information

#### Source

Rabbit

#### Isotype

IgG

#### Purification

Affinity purification

#### Storage

Store at -20°C. Avoid freeze / thaw cycles.

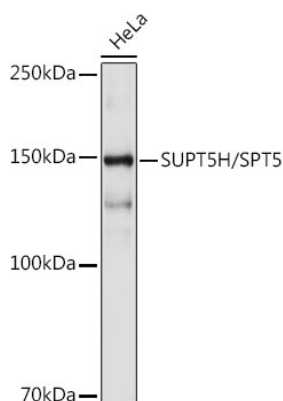
Buffer: PBS with 0.02% sodium azide,0.05% BSA,50% glycerol,pH7.3.

### Contact

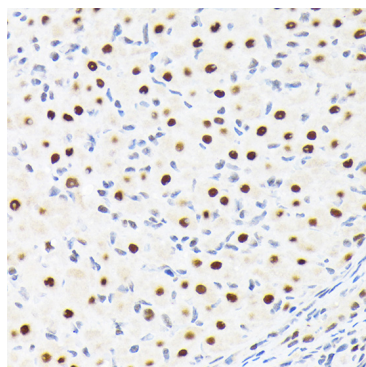


[www.abclonal.com](http://www.abclonal.com)

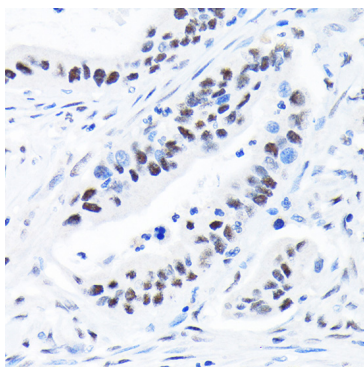
## Validation Data



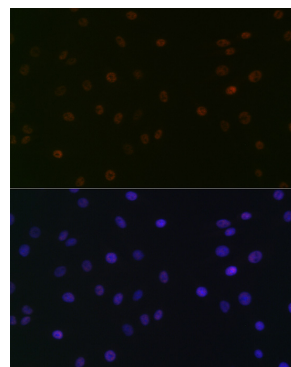
Western blot analysis of lysates from HeLa cells, using SUPT5H/SPT5 Rabbit mAb (A19225) at 1:1000 dilution.  
Secondary antibody: HRP-conjugated Goat anti-Rabbit IgG (H+L) (AS014) at 1:10000 dilution.  
Lysates/proteins: 25µg per lane.  
Blocking buffer: 3% nonfat dry milk in TBST.  
Detection: ECL Basic Kit (RM00020).  
Exposure time: 10s.



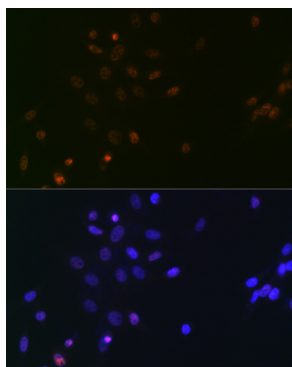
Immunohistochemistry analysis of paraffin-embedded Rat ovary using SUPT5H/SPT5 Rabbit mAb (A19225) at dilution of 1:100 (40x lens). Microwave antigen retrieval performed with 0.01M Tris/EDTA Buffer (pH 9.0) prior to IHC staining.



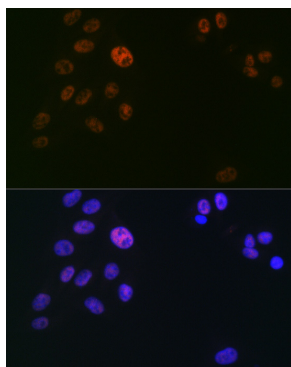
Immunohistochemistry analysis of paraffin-embedded Human colon carcinoma using SUPT5H/SPT5 Rabbit mAb (A19225) at dilution of 1:100 (40x lens). Microwave antigen retrieval performed with 0.01M Tris/EDTA Buffer (pH 9.0) prior to IHC staining.



Immunofluorescence analysis of C6 cells using SUPT5H/SPT5 Rabbit mAb (A19225) at dilution of 1:100 (40x lens). Secondary antibody: Cy3-conjugated Goat anti-Rabbit IgG (H+L) (AS007) at 1:500 dilution. Blue: DAPI for nuclear staining.

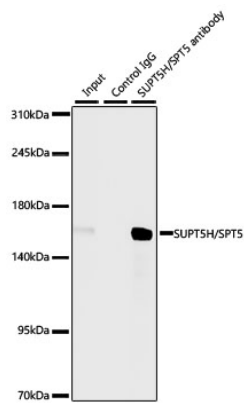


Immunofluorescence analysis of NIH/3T3 cells using SUPT5H/SPT5 Rabbit mAb (A19225) at dilution of 1:100 (40x lens). Secondary antibody: Cy3-conjugated Goat anti-Rabbit IgG (H+L) (AS007) at 1:500 dilution. Blue: DAPI for nuclear staining.



Immunofluorescence analysis of U2OS cells using SUPT5H/SPT5 Rabbit mAb (A19225) at dilution of 1:100 (40x lens). Secondary antibody: Cy3-conjugated Goat anti-Rabbit IgG (H+L) (AS007) at 1:500 dilution. Blue: DAPI for nuclear staining.

## Validation Data



Immunoprecipitation of SUPT5H/SPT5 from 300 µg extracts of HeLa cells was performed using 3 µg of SUPT5H/SPT5 Rabbit mAb (A19225). Rabbit Control IgG (AC005) was used to precipitate the Control IgG sample. IP samples were eluted with 1X Laemmli Buffer. The Input lane represents 10% of the total input. Western blot analysis of immunoprecipitates was conducted using SUPT5H/SPT5 Rabbit mAb (A19225) at a dilution of 1:1000.