

A19110

Leader in Biomolecular Solutions for Life Science



Serotonin transporter Rabbit mAb

Catalog No.: A19110

Recombinant

Basic Information

Observed MW

70kDa/

Calculated MW

70kDa/75kDa

Category

Monoclonal Antibody

Applications

WB,IP,ELISA,IF-P

Cross-Reactivity

Human,Rat

CloneNo number

ARC0441

Background

This gene encodes an integral membrane protein that transports the neurotransmitter serotonin from synaptic spaces into presynaptic neurons. The encoded protein terminates the action of serotonin and recycles it in a sodium-dependent manner. This protein is a target of psychomotor stimulants, such as amphetamines and cocaine, and is a member of the sodium:neurotransmitter symporter family. A repeat length polymorphism in the promoter of this gene has been shown to affect the rate of serotonin uptake. There have been conflicting results in the literature about the possible effect, if any, that this polymorphism may play in behavior and depression.

Recommended Dilutions

WB 1:500 - 1:1000

IP 0.5µg-4µg antibody for
400µg-600µg extracts
of whole cells

IF-P 1:50 - 1:200

ELISA Recommended starting
concentration is 1
µg/mL. Please optimize
the concentration
based on your specific
assay requirements.

Immunogen Information

Gene ID
6532

Swiss Prot
P31645

Immunogen

Synthetic peptide. This information is considered to be commercially sensitive.

Synonyms

HTT; 5HTT; OCD1; SERT; 5-HTT; SERT1; hSERT; 5-HTTLPR; Serotonin transporter

Product Information

Source
Rabbit

Isotype
IgG

Purification
Affinity purification

Storage

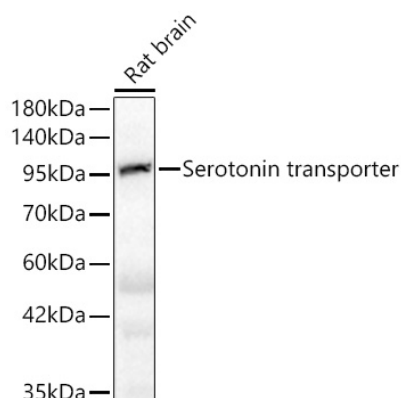
Store at -20°C. Avoid freeze / thaw cycles.

Buffer: PBS containing 50% glycerol and 0.05% BSA, preserved with proclin300 or sodium azide (as specified on the Certificate of Analysis), pH 7.3.

Contact

 www.abclonal.com

Validation Data



Western blot analysis of rat brain using Serotonin transporter Rabbit mAb (A19110) at 1:1000 dilution.

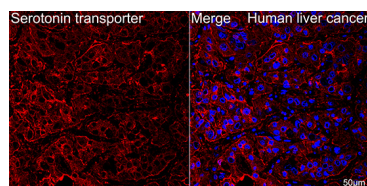
Secondary antibody: HRP-conjugated Goat anti-Rabbit IgG (H+L) (AS014) at 1:10000 dilution.

Lysates/proteins: 25µg per lane.

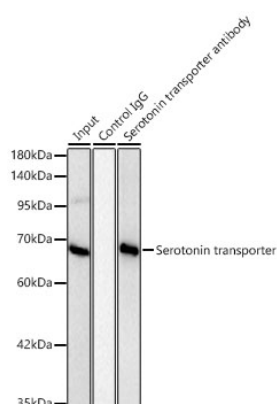
Blocking buffer: 3% nonfat dry milk in TBST.

Detection: ECL Basic Kit (RM00020).

Exposure time: 5s.



Confocal imaging of paraffin-embedded Human liver cancer tissue using Serotonin transporter Rabbit mAb (A19110, dilution 1:200) followed by a further incubation with Cy3 Goat Anti-Rabbit IgG (H+L) (AS007, dilution 1:500) (Red). DAPI was used for nuclear staining (Blue). Objective: 40x. Perform high pressure antigen retrieval with 0.01 M citrate buffer (pH 6.0) prior to IF staining.



Immunoprecipitation of Serotonin transporter from 500 µg extracts of HT-29 cells was performed using 2 µg of Serotonin transporter Rabbit mAb (A19110). Rabbit IgG isotype control (AC042) was used to precipitate the Control IgG sample. IP samples were eluted with 1X Laemmli Buffer. The Input lane represents 10% of the total input. Western blot analysis of immunoprecipitates was conducted using Serotonin transporter Rabbit mAb (A19110) at a dilution of 1:1000.