

A19107

Leader in Biomolecular Solutions for Life Science



## S100/S100A1 Rabbit mAb

Catalog No.: A19107

Recombinant

### Basic Information

#### Observed MW

11kDa

#### Calculated MW

11kDa

#### Category

SMab Recombinant Monoclonal  
Antibody

#### Applications

WB,ELISA

#### Cross-Reactivity

Mouse

#### CloneNo number

ARC0404

### Background

The protein encoded by this gene is a member of the S100 family of proteins containing 2 EF-hand calcium-binding motifs. S100 proteins are localized in the cytoplasm and/or nucleus of a wide range of cells, and involved in the regulation of a number of cellular processes such as cell cycle progression and differentiation. S100 genes include at least 13 members which are located as a cluster on chromosome 1q21. This protein may function in stimulation of Ca<sup>2+</sup>-induced Ca<sup>2+</sup> release, inhibition of microtubule assembly, and inhibition of protein kinase C-mediated phosphorylation. Reduced expression of this protein has been implicated in cardiomyopathies.

### Recommended Dilutions

WB 1:500 - 1:1000

### Immunogen Information

#### Gene ID

6271

#### Swiss Prot

P23297

#### Immunogen

Recombinant fusion protein containing a sequence corresponding to amino acids 2-94 of human S100/S100A1 (P23297).

#### Synonyms

S100; S100A; S100-alpha; S100/S100A1

### Contact



[www.abclonal.com](http://www.abclonal.com)

### Product Information

#### Source

Rabbit

#### Isotype

IgG

#### Purification

Affinity purification

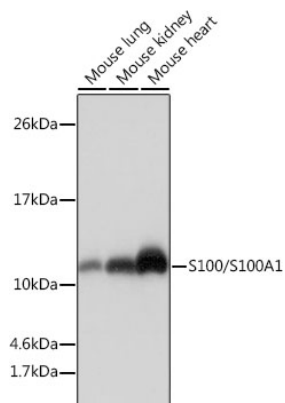
#### Storage

Store at -20°C. Avoid freeze / thaw cycles.

Buffer: PBS with 0.02% sodium azide, 0.05% BSA, 50% glycerol, pH7.3.

## Validation Data

---



Western blot analysis of extracts of various cell lines, using S100/S100A1 antibody (A19107) at 1:1000 dilution.

Secondary antibody: HRP Goat Anti-Rabbit IgG (H+L) (AS014) at 1:10000 dilution.

Lysates/proteins: 25µg per lane.

Blocking buffer: 3% nonfat dry milk in TBST.

Detection: ECL Basic Kit (RM00020).

Exposure time: 1s.