

A1900

Leader in Biomolecular Solutions for Life Science



C5AR1 Rabbit pAb

Catalog No.: A1900

1 Publications

Basic Information

Observed MW

45kDa

Calculated MW

39kDa

Category

Polyclonal Antibody

Applications

WB,IHC-P,ELISA

Cross-Reactivity

Human,Mouse,Rat

Background

Enables G protein-coupled receptor activity and complement component C5a receptor activity. Involved in several processes, including complement component C5a signaling pathway; mRNA transcription by RNA polymerase II; and positive regulation of ERK1 and ERK2 cascade. Located in apical part of cell and basolateral plasma membrane. Biomarker of Alzheimer's disease; asthma; chronic obstructive pulmonary disease; rhinitis; and severe acute respiratory syndrome.

Recommended Dilutions

WB 1:500 - 1:1000

IHC-P 1:50 - 1:200

ELISA Recommended starting concentration is 1 µg/mL. Please optimize the concentration based on your specific assay requirements.

Immunogen Information

Gene ID

728

Swiss Prot

P21730

Immunogen

Recombinant fusion protein containing a sequence corresponding to amino acids 1-282 of human C5AR1 (NP_001727.2).

Synonyms

C5A; C5AR; C5R1; CD88; C5AR1

Contact



www.abclonal.com

Product Information

Source

Rabbit

Isotype

IgG

Purification

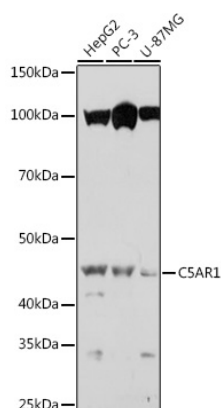
Affinity purification

Storage

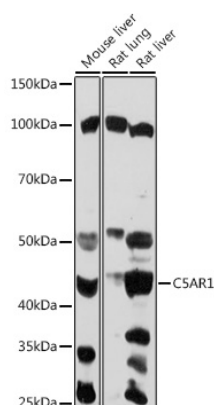
Store at -20°C. Avoid freeze / thaw cycles.

Buffer: PBS with 0.01% thimerosal, 50% glycerol, pH 7.3.

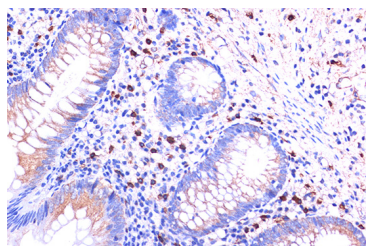
Validation Data



Western blot analysis of various lysates using C5AR1 Rabbit pAb (A1900) at 1:1000 dilution.
Secondary antibody: HRP-conjugated Goat anti-Rabbit IgG (H+L) (AS014) at 1:10000 dilution.
Lysates/proteins: 25µg per lane.
Blocking buffer: 3% nonfat dry milk in TBST.
Detection: ECL Basic Kit (RM00020).
Exposure time: 10s.



Western blot analysis of various lysates using C5AR1 Rabbit pAb (A1900) at 1:1000 dilution.
Secondary antibody: HRP-conjugated Goat anti-Rabbit IgG (H+L) (AS014) at 1:10000 dilution.
Lysates/proteins: 25µg per lane.
Blocking buffer: 3% nonfat dry milk in TBST.
Detection: ECL Basic Kit (RM00020).
Exposure time: 30s.



Immunohistochemistry analysis of paraffin-embedded Human appendix using C5AR1 Rabbit pAb (A1900) at dilution of 1:100 (40x lens).
Microwave antigen retrieval performed with 0.01M PBS Buffer (pH 7.2) prior to IHC staining.