

A18836

Leader in Biomolecular Solutions for Life Science



FAM160B2 Rabbit pAb

Catalog No.: A18836

Basic Information

Observed MW

82kDa

Calculated MW

82kDa

Category

Polyclonal Antibody

Applications

WB,IHC-P,IF/ICC,IP,ELISA

Cross-Reactivity

Human,Mouse,Rat

Background

Orthologous to human FHIP2B (FHF complex subunit HOOK interacting protein 2B).

Recommended Dilutions

WB 1:500 - 1:1000

IHC-P 1:50 - 1:200

IF/ICC 1:50 - 1:200

IP 0.5µg-4µg antibody for
400µg-600µg extracts
of whole cells

ELISA Recommended starting
concentration is 1
µg/mL. Please optimize
the concentration
based on your specific
assay requirements.

Immunogen Information

Gene ID

239170

Swiss Prot

Q80YR2

Immunogen

Recombinant protein (or fragment). This information is considered to be commercially sensitive.

Synonyms

Rai16; Fam160b2; G430067P06Rik; FAM160B2

Product Information

Source

Rabbit

Isotype

IgG

Purification

Affinity purification

Storage

Store at -20°C. Avoid freeze / thaw cycles.

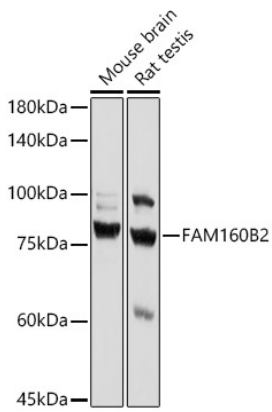
Buffer: PBS containing 50% glycerol, preserved with proclin300 or sodium azide (as specified on the Certificate of Analysis), pH 7.3.

Contact



www.abclonal.com

Validation Data



Western blot analysis of various lysates using FAM160B2 Rabbit pAb (A18836) at 1:1000 dilution.

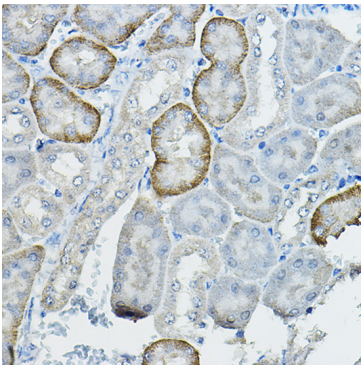
Secondary antibody: HRP-conjugated Goat anti-Rabbit IgG (H+L) (AS014) at 1:10000 dilution.

Lysates/proteins: 25µg per lane.

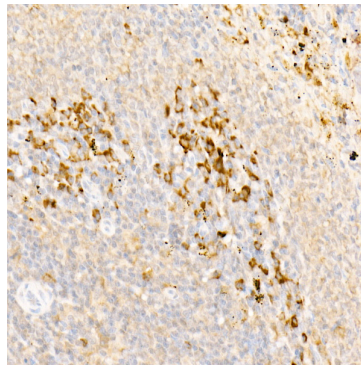
Blocking buffer: 3% nonfat dry milk in TBST.

Detection: ECL Basic Kit (RM00020).

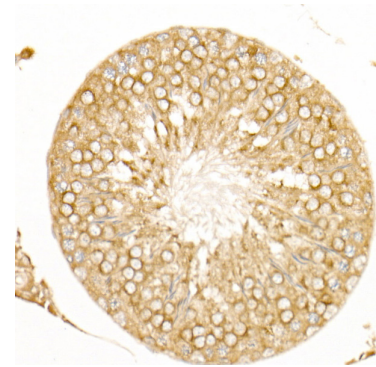
Exposure time: 30s.



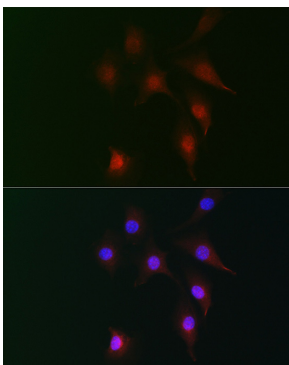
Immunohistochemistry analysis of paraffin-embedded Mouse kidney using FAM160B2 Rabbit pAb (A18836) at dilution of 1:100 (40x lens). High pressure antigen retrieval performed with 0.01M Citrate buffer (pH 6.0) prior to IHC staining.



Immunohistochemistry analysis of paraffin-embedded Rat spleen using FAM160B2 Rabbit pAb (A18836) at dilution of 1:100 (40x lens). High pressure antigen retrieval performed with 0.01M Citrate buffer (pH 6.0) prior to IHC staining.

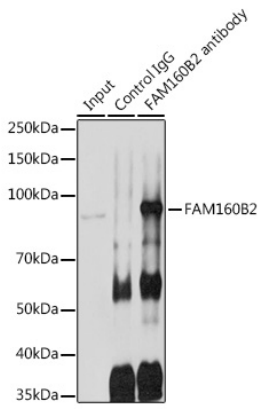


Immunohistochemistry analysis of paraffin-embedded Rat testis using FAM160B2 Rabbit pAb (A18836) at dilution of 1:100 (40x lens). High pressure antigen retrieval performed with 0.01M Citrate buffer (pH 6.0) prior to IHC staining.



Immunofluorescence analysis of NIH-3T3 cells using FAM160B2 Rabbit pAb (A18836) at dilution of 1:100 (40x lens). Secondary antibody: Cy3-conjugated Goat anti-Rabbit IgG (H+L) (AS007) at 1:500 dilution. Blue: DAPI for nuclear staining.

Validation Data



Immunoprecipitation analysis of 600 µg extracts of Rat testis cells using 3 µg FAM160B2 antibody (A18836). Western blot was performed from the immunoprecipitate using FAM160B2 antibody (A18836) at a dilution of 1:1000.