

A18835

Leader in Biomolecular Solutions for Life Science



# FAM160B2 Rabbit pAb

Catalog No.: A18835

## Basic Information

### Observed MW

82kDa

### Calculated MW

82kDa

### Category

Polyclonal Antibody

### Applications

WB,IF/ICC,IP,ELISA

### Cross-Reactivity

Human,Mouse,Rat

## Background

Able to activate MAPK/ERK and TGFB signaling pathways. May regulate the activity of genes involved in intestinal barrier function and immunoprotective inflammation (By similarity. May play a role in cell proliferation.

## Recommended Dilutions

**WB** 1:500 - 1:2000

**IF/ICC** 1:50 - 1:200

**IP** 0.5µg-4µg antibody for  
400µg-600µg extracts  
of whole cells

**ELISA** Recommended starting  
concentration is 1  
µg/mL. Please optimize  
the concentration  
based on your specific  
assay requirements.

## Contact

 [www.abclonal.com](http://www.abclonal.com)

## Immunogen Information

### Gene ID

64760

### Swiss Prot

Q86V87

### Immunogen

Recombinant protein (or fragment). This information is considered to be commercially sensitive.

### Synonyms

FAI16; RAI16; FAM160B2; RAM160B2

## Product Information

### Source

Rabbit

### Isotype

IgG

### Purification

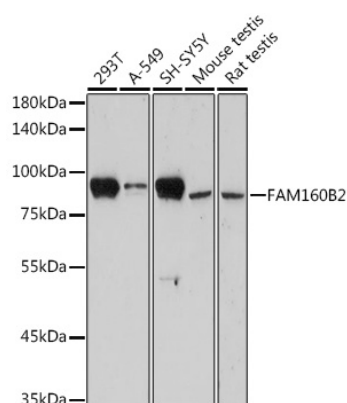
Affinity purification

### Storage

Store at -20°C. Avoid freeze / thaw cycles.

Buffer: PBS containing 50% glycerol, preserved with proclin300 or sodium azide (as specified on the Certificate of Analysis), pH 7.3.

## Validation Data



Western blot analysis of various lysates using FAM160B2 Rabbit pAb (A18835) at 1:1000 dilution.

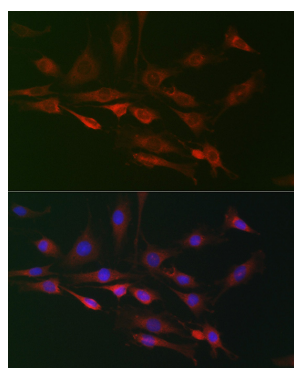
Secondary antibody: HRP-conjugated Goat anti-Rabbit IgG (H+L) (AS014) at 1:10000 dilution.

Lysates/proteins: 25µg per lane.

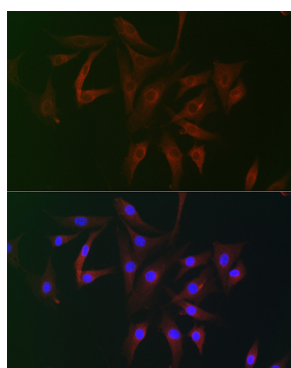
Blocking buffer: 3% nonfat dry milk in TBST.

Detection: ECL Enhanced Kit (RM00021).

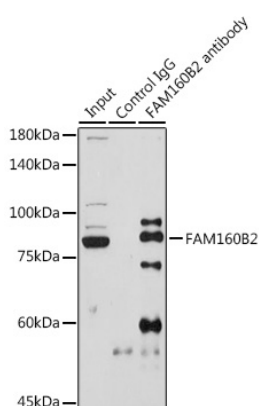
Exposure time: 3min.



Immunofluorescence analysis of C6 cells using FAM160B2 Rabbit pAb (A18835) at dilution of 1:100 (40x lens). Secondary antibody: Cy3-conjugated Goat anti-Rabbit IgG (H+L) (AS007) at 1:500 dilution. Blue: DAPI for nuclear staining.



Immunofluorescence analysis of NIH/3T3 cells using FAM160B2 Rabbit pAb (A18835) at dilution of 1:100 (40x lens). Secondary antibody: Cy3-conjugated Goat anti-Rabbit IgG (H+L) (AS007) at 1:500 dilution. Blue: DAPI for nuclear staining.



Immunoprecipitation analysis of 600 µg extracts of Rat testis cells using 3 µg FAM160B2 antibody (A18835). Western blot was performed from the immunoprecipitate using FAM160B2 antibody (A18835) at a dilution of 1:1000.