

A18831

Leader in Biomolecular Solutions for Life Science



Pan Lactic acid-Lysine Rabbit pAb

Catalog No.: A18831

1 Publications

Basic Information

Observed MW

Calculated MW

Category

Polyclonal Antibody

Applications

WB, ELISA

Cross-Reactivity

Human, Mouse, Rat, Other (Wide Range)

Background

Histone lysine lactation (Kla) is a newly discovered histone modification that regulates gene expression in macrophages. In M1 macrophages, lactic acid is derived from incompletely oxidized glucose and then produces lactyl-CoA, which is transferred via acetyltransferase p300 to the lysine tail of the histone. This modification is abundant in gene promoter regions that lack acetylation and are associated with gene expression activation.

Recommended Dilutions

WB 1:500 - 1:1000

ELISA Recommended starting concentration is 1 µg/mL. Please optimize the concentration based on your specific assay requirements.

Immunogen Information

Gene ID

Swiss Prot

Immunogen

Synthetic peptide. This information is considered to be commercially sensitive.

Synonyms

Contact

 www.abclonal.com

Product Information

Source

Rabbit

Isotype

IgG

Purification

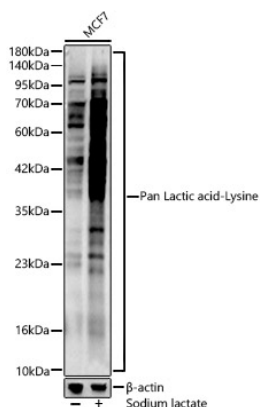
Affinity purification

Storage

Store at -20°C. Avoid freeze / thaw cycles.

Buffer: PBS with 0.09% sodium azide, 50% glycerol, pH 7.3.

Validation Data



Western blot analysis of lysates from MCF7 cells, using Pan Lactic acid-Lysine Rabbit pAb (A18831) at 1:400 dilution. MCF7 cells were treated with Sodium lactate(100mM) for 24h.

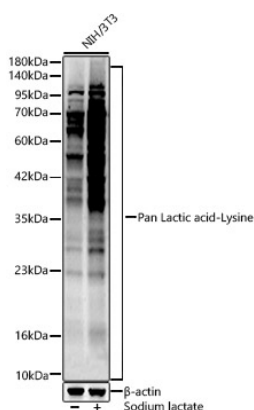
Secondary antibody: HRP-conjugated Goat anti-Rabbit IgG (H+L) (AS014) at 1:10000 dilution.

Lysates/proteins: 25µg per lane.

Blocking buffer: 3% nonfat dry milk in TBST.

Detection: ECL Enhanced Kit (RM00021).

Exposure time: 60s.



Western blot analysis of lysates from NIH/3T3 cells, using Pan Lactic acid-Lysine Rabbit pAb (A18831) at 1:400 dilution. NIH/3T3 cells were treated with Sodium lactate(100mM) for 24h.

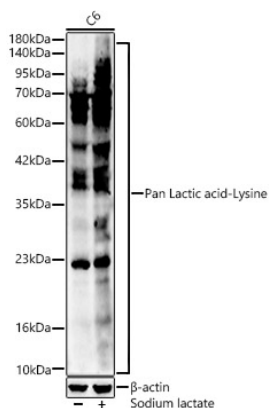
Secondary antibody: HRP-conjugated Goat anti-Rabbit IgG (H+L) (AS014) at 1:10000 dilution.

Lysates/proteins: 25µg per lane.

Blocking buffer: 3% nonfat dry milk in TBST.

Detection: ECL Enhanced Kit (RM00021).

Exposure time: 60s.



Western blot analysis of lysates from C6 cells, using Pan Lactic acid-Lysine Rabbit pAb (A18831) at 1:400 dilution. C6 cells were treated with Sodium lactate(100mM) for 24h.

Secondary antibody: HRP-conjugated Goat anti-Rabbit IgG (H+L) (AS014) at 1:10000 dilution.

Lysates/proteins: 25µg per lane.

Blocking buffer: 3% nonfat dry milk in TBST.

Detection: ECL Enhanced Kit (RM00021).

Exposure time: 60s.