

A18670

Leader in Biomolecular Solutions for Life Science



## PIGO Rabbit pAb

Catalog No.: A18670

### Basic Information

#### Observed MW

119kDa

#### Calculated MW

119kDa

#### Category

Polyclonal Antibody

#### Applications

WB, ELISA

#### Cross-Reactivity

Human, Mouse

### Background

This gene encodes a protein that is involved in glycosylphosphatidylinositol (GPI)-anchor biosynthesis. The GPI-anchor is a glycolipid which contains three mannose molecules in its core backbone. The GPI-anchor is found on many blood cells and serves to anchor proteins to the cell surface. This protein is involved in the transfer of ethanolaminephosphate (EtNP) to the third mannose in GPI. At least three alternatively spliced transcripts encoding two distinct isoforms have been found for this gene.

### Recommended Dilutions

**WB** 1:500 - 1:2000

**ELISA** Recommended starting concentration is 1 µg/mL. Please optimize the concentration based on your specific assay requirements.

### Immunogen Information

#### Gene ID

84720

#### Swiss Prot

Q8TEQ8

#### Immunogen

Synthetic peptide. This information is considered to be commercially sensitive.

#### Synonyms

HPMRS2; PIGO

### Contact



[www.abclonal.com](http://www.abclonal.com)

### Product Information

#### Source

Rabbit

#### Isotype

IgG

#### Purification

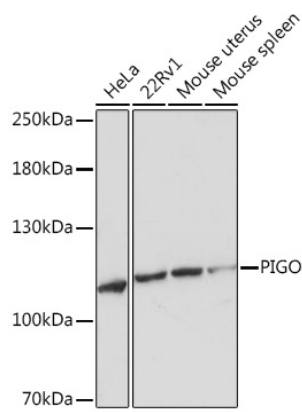
Affinity purification

#### Storage

Store at -20°C. Avoid freeze / thaw cycles.

Buffer: PBS with 0.01% thimerosal, 50% glycerol, pH 7.3.

# Validation Data



Western blot analysis of various lysates using PIGO Rabbit pAb (A18670) at 1:1000 dilution.  
Secondary antibody: HRP-conjugated Goat anti-Rabbit IgG (H+L) (AS014) at 1:10000 dilution.  
Lysates/proteins: 25µg per lane.  
Blocking buffer: 3% nonfat dry milk in TBST.  
Detection: ECL Basic Kit (RM00020).  
Exposure time: 60s.