

A18658

Leader in Biomolecular Solutions for Life Science



H2-Ab1 Rabbit pAb

Catalog No.: A18658

6 Publications

Basic Information

Observed MW

30kDa

Calculated MW

30kDa

Category

Polyclonal Antibody

Applications

WB,IHC-P,IF/ICC,ELISA

Cross-Reactivity

Human,Mouse,Rat

Background

Enables several functions, including peptide antigen binding activity; protein antigen binding activity; and toxic substance binding activity. Involved in several processes, including B cell affinity maturation; cellular response to interferon-gamma; and positive regulation of T-helper 1 type immune response. Acts upstream of or within antigen processing and presentation of exogenous peptide antigen via MHC class II and immune response. Located in Golgi apparatus; endosome; and external side of plasma membrane. Is integral component of membrane. Part of MHC class II protein complex. Is expressed in lung; metanephros; and thymus primordium. Orthologous to human HLA-DQB2 (major histocompatibility complex, class II, DQ beta 2).

Recommended Dilutions

WB 1:500 - 1:5000

IHC-P 1:50 - 1:200

IF/ICC 1:50 - 1:200

ELISA Recommended starting concentration is 1 µg/mL. Please optimize the concentration based on your specific assay requirements.

Immunogen Information

Gene ID

14961

Swiss Prot

P06345

Immunogen

Recombinant protein (or fragment). This information is considered to be commercially sensitive.

Synonyms

IAb; Ia2; Ia-2; Abeta; H-2Ab; H2-Ab; Rmcs1; I-Abeta; H2-Ab1

Product Information

Source

Rabbit

Isotype

IgG

Purification

Affinity purification

Storage

Store at -20°C. Avoid freeze / thaw cycles.

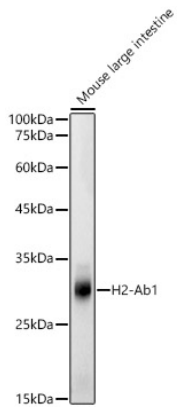
Buffer: PBS containing 50% glycerol, preserved with proclin300 or sodium azide (as specified on the Certificate of Analysis), pH 7.3.

Contact



www.abclonal.com

Validation Data



Western blot analysis of lysates from Mouse large intestine, using H2-Ab1 Rabbit pAb (A18658) at 1:500 dilution.

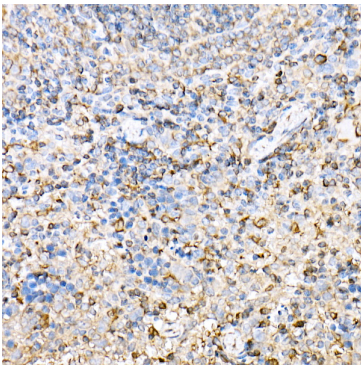
Secondary antibody: HRP-conjugated Goat anti-Rabbit IgG (H+L) (AS014) at 1:10000 dilution.

Lysates/proteins: 25µg per lane.

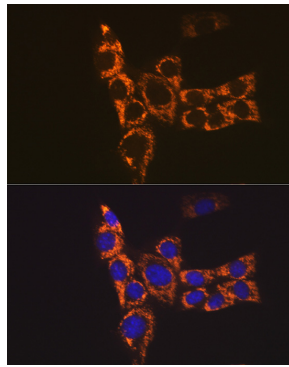
Blocking buffer: 3% nonfat dry milk in TBST.

Detection: ECL Basic Kit (RM00020).

Exposure time: 20s.



Immunohistochemistry analysis of paraffin-embedded Mouse spleen using H2-Ab1 Rabbit pAb (A18658) at dilution of 1:50 (40x lens). High pressure antigen retrieval performed with 0.01M Citrate buffer (pH 6.0) prior to IHC staining.



Immunofluorescence analysis of NIH-3T3 cells using H2-Ab1 Rabbit pAb (A18658) at dilution of 1:100 (40x lens). Secondary antibody: Cy3-conjugated Goat anti-Rabbit IgG (H+L) (AS007) at 1:500 dilution. Blue: DAPI for nuclear staining.