

A18581

Leader in Biomolecular Solutions for Life Science



# ADH1A/ADH1B/ADH1C Rabbit pAb

Catalog No.: A18581

1 Publications

## Basic Information

### Observed MW

40kDa

### Calculated MW

### Category

Polyclonal Antibody

### Applications

WB,IF/ICC,ELISA

### Cross-Reactivity

Human,Mouse,Rat

## Background

Alcohol dehydrogenase,consisting of several homo- and heterodimers of alpha, beta, and gamma subunits, exhibits high activity for ethanol oxidation and plays a major role in ethanol catabolism.Members of this enzyme family metabolize a wide variety of substrates, including ethanol, retinol, other aliphatic alcohols, hydroxysteroids, and lipid peroxidation products. Three genes encoding alpha, beta and gamma subunits are tandemly organized in a genomic segment as a gene cluster.

## Recommended Dilutions

WB 1:500 - 1:2000

IF/ICC 1:50 - 1:200

## Immunogen Information

### Gene ID

124/125/126

### Swiss Prot

P07327/P00325/P00326

### Immunogen

A synthetic peptide corresponding to a sequence within amino acids 270-370 of human ADH1A/ADH1B/ADH1C (NP\_000659.2).

### Synonyms

ADH1A/ADH1B/ADH1C

## Contact

 [www.abclonal.com](http://www.abclonal.com)

## Product Information

### Source

Rabbit

### Isotype

IgG

### Purification

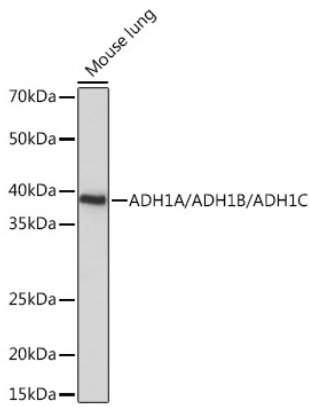
Affinity purification

### Storage

Store at -20°C. Avoid freeze / thaw cycles.

Buffer: PBS with 0.01% thimerosal,50% glycerol,pH7.3.

## Validation Data



Western blot analysis of lysates from Mouse lung, using ADH1A/ADH1B/ADH1C Rabbit pAb (A18581) at 1:1000 dilution.

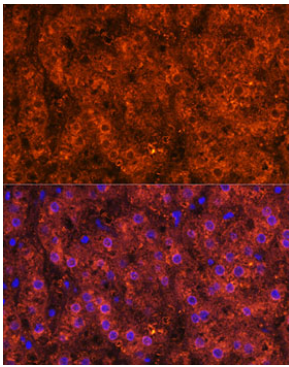
Secondary antibody: HRP Goat Anti-Rabbit IgG (H+L) (AS014) at 1:10000 dilution.

Lysates/proteins: 25µg per lane.

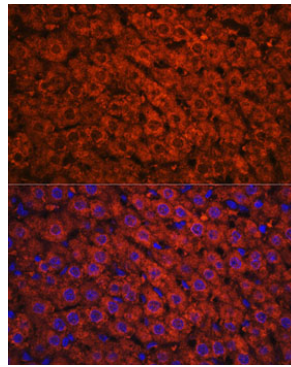
Blocking buffer: 3% nonfat dry milk in TBST.

Detection: ECL Basic Kit (RM00020).

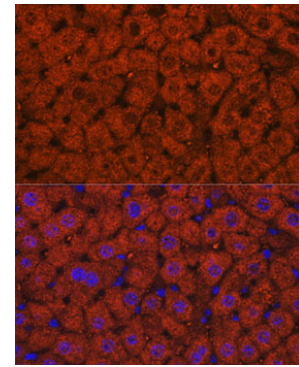
Exposure time: 10s.



Immunofluorescence analysis of paraffin-embedded Human liver using ADH1A/ADH1B/ADH1C Rabbit pAb (A18581) at dilution of 1:100. Secondary antibody: Cy3 Goat Anti-Rabbit IgG (H+L) (AS007) at 1:500 dilution. Blue: DAPI for nuclear staining.



Immunofluorescence analysis of paraffin-embedded Rat liver using ADH1A/ADH1B/ADH1C Rabbit pAb (A18581) at dilution of 1:100. Secondary antibody: Cy3 Goat Anti-Rabbit IgG (H+L) (AS007) at 1:500 dilution. Blue: DAPI for nuclear staining.



Immunofluorescence analysis of paraffin-embedded Mouse liver using ADH1A/ADH1B/ADH1C Rabbit pAb (A18581) at dilution of 1:100. Secondary antibody: Cy3 Goat Anti-Rabbit IgG (H+L) (AS007) at 1:500 dilution. Blue: DAPI for nuclear staining.