

A18575

Leader in Biomolecular Solutions for Life Science



PRKG2 Rabbit pAb

Catalog No.: A18575

Basic Information

Observed MW

100kDa

Calculated MW

87kDa

Category

Polyclonal Antibody

Applications

WB,IF/ICC,IP,ELISA

Cross-Reactivity

Mouse,Rat

Background

This gene encodes a protein that belongs to the serine/threonine protein kinase family of proteins. The encoded protein binds to and inhibits the activation of several receptor tyrosine kinases. The membrane-bound protein is a regulator of intestinal secretion, bone growth and renin secretion. Alternate splicing results in multiple transcript variants encoding distinct isoforms whose regulatory N-termini differ in length but whose C-terminal catalytic domains are identical.

Recommended Dilutions

WB 1:500 - 1:2000

IF/ICC 1:50 - 1:200

IP 0.5µg-4µg antibody for
400µg-600µg extracts
of whole cells

ELISA Recommended starting
concentration is 1
µg/mL. Please optimize
the concentration
based on your specific
assay requirements.

Immunogen Information

Gene ID

5593

Swiss Prot

Q13237

Immunogen

Recombinant protein (or fragment). This information is considered to be commercially sensitive.

Synonyms

AMD4; PKG2; SMDP; cGK2; cGKII; PRKGR2; PRKG2

Product Information

Source

Rabbit

Isotype

IgG

Purification

Affinity purification

Storage

Store at -20°C. Avoid freeze / thaw cycles.

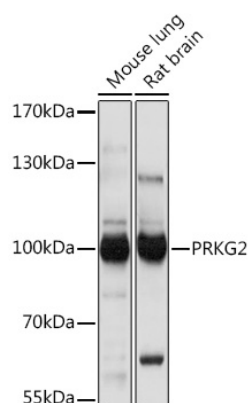
Buffer: PBS with 0.01% thimerosal, 50% glycerol, pH7.3.

Contact

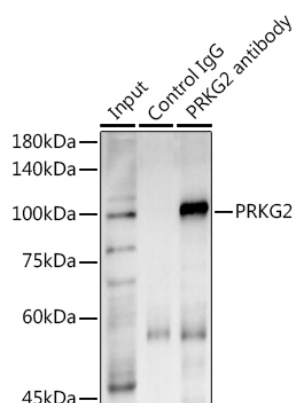


www.abclonal.com

Validation Data



Western blot analysis of various lysates using PRKG2 Rabbit pAb (A18575) at 1:1000 dilution.
Secondary antibody: HRP-conjugated Goat anti-Rabbit IgG (H+L) (AS014) at 1:10000 dilution.
Lysates/proteins: 25µg per lane.
Blocking buffer: 3% nonfat dry milk in TBST.
Detection: ECL Basic Kit (RM00020).
Exposure time: 1s.



Immunoprecipitation analysis of 600 µg extracts of Mouse lung using 3 µg PRKG2 antibody (A18575). Western blot was performed from the immunoprecipitate using PRKG2 antibody (A18575) at a dilution of 1:1000.