

A18538

Leader in Biomolecular Solutions for Life Science



PIGU Rabbit pAb

Catalog No.: A18538 **2 Publications**

Basic Information

Observed MW

50kDa

Calculated MW

50kDa

Category

Polyclonal Antibody

Applications

WB,IHC-P,IF/ICC,ELISA

Cross-Reactivity

Human,Mouse,Rat

Background

The protein encoded by this gene shares similarity with *Saccharomyces cerevisiae* Cdc91, a predicted integral membrane protein that may function in cell division control. The protein encoded by this gene is the fifth subunit of GPI transamidase that attaches GPI-anchors to proteins.

Recommended Dilutions

WB	1:500 - 1:2000
IHC-P	1:50 - 1:200
IF/ICC	1:50 - 1:200
ELISA	Recommended starting concentration is 1 µg/mL. Please optimize the concentration based on your specific assay requirements.

Contact

 www.abclonal.com

Immunogen Information

Gene ID	Swiss Prot
128869	Q9H490

Immunogen

Synthetic peptide. This information is considered to be commercially sensitive.

Synonyms

GAB1; PIG-U; NEDBSS; CDC91L1; GPIBD21; PIGU

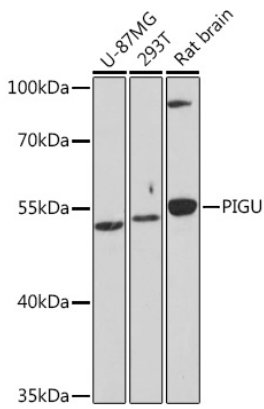
Product Information

Source	Isotype	Purification
Rabbit	IgG	Affinity purification

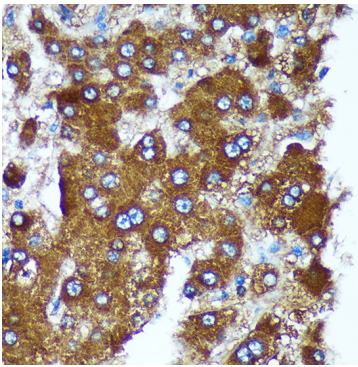
Storage

Store at -20°C. Avoid freeze / thaw cycles.
Buffer: PBS with 0.01% thimerosal, 50% glycerol, pH7.3.

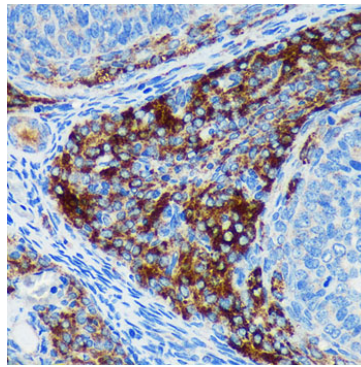
Validation Data



Western blot analysis of various lysates using PIGU Rabbit pAb (A18538) at 1:1000 dilution.
Secondary antibody: HRP-conjugated Goat anti-Rabbit IgG (H+L) (AS014) at 1:10000 dilution.
Lysates/proteins: 25µg per lane.
Blocking buffer: 3% nonfat dry milk in TBST.
Detection: ECL Basic Kit (RM00020).
Exposure time: 30s.



Immunohistochemistry analysis of paraffin-embedded Human liver cancer using PIGU Rabbit pAb (A18538) at dilution of 1:100 (40x lens). Microwave antigen retrieval performed with 0.01M PBS Buffer (pH 7.2) prior to IHC staining.



Immunohistochemistry analysis of paraffin-embedded Rat ovary using PIGU Rabbit pAb (A18538) at dilution of 1:100 (40x lens). Microwave antigen retrieval performed with 0.01M PBS Buffer (pH 7.2) prior to IHC staining.