

A18532

Leader in Biomolecular Solutions for Life Science



GPR168 Rabbit pAb

Catalog No.: A18532

Basic Information

Observed MW

38kDa

Calculated MW

38kDa

Category

Polyclonal Antibody

Applications

WB, ELISA

Cross-Reactivity

Human, Mouse, Rat

Background

Predicted to enable G protein-coupled receptor activity. Predicted to be involved in G protein-coupled receptor signaling pathway. Located in nuclear membrane and plasma membrane.

Recommended Dilutions

WB 1:500 - 1:1000

Immunogen Information

Gene ID

116535

Swiss Prot

Q96AM1

Immunogen

Recombinant protein of human GPR168.

Synonyms

RTA; MRGF; GPR140; GPR168

Contact



www.abclonal.com

Product Information

Source

Rabbit

Isotype

IgG

Purification

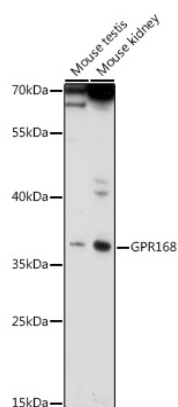
Affinity purification

Storage

Store at -20°C. Avoid freeze / thaw cycles.

Buffer: PBS with 0.02% sodium azide, 50% glycerol, pH 7.3.

Validation Data



Western blot analysis of various lysates using GPR168 Rabbit pAb (A18532) at 1:1000 dilution.
Secondary antibody: HRP Goat Anti-Rabbit IgG (H+L) (A5014) at 1:10000 dilution.
Lysates/proteins: 25µg per lane.
Blocking buffer: 3% nonfat dry milk in TBST.
Detection: ECL Basic Kit (RM00020).
Exposure time: 90s.