

A18526

Leader in Biomolecular Solutions for Life Science



Topors Rabbit pAb

Catalog No.: A18526

Basic Information

Observed MW

119kDa

Calculated MW

117kDa

Category

Polyclonal Antibody

Applications

WB,ELISA

Cross-Reactivity

Mouse,Rat

Background

Predicted to enable several functions, including DNA topoisomerase binding activity; antigen binding activity; and ubiquitin-like protein transferase activity. Acts upstream of or within intrinsic apoptotic signaling pathway in response to DNA damage by p53 class mediator; positive regulation of transcription, DNA-templated; and regulation of cell population proliferation. Located in ciliary basal body; nucleus; and photoreceptor connecting cilium. Is expressed in skin. Human ortholog(s) of this gene implicated in retinitis pigmentosa 31. Orthologous to human TOPORS (TOP1 binding arginine/serine rich protein, E3 ubiquitin ligase).

Recommended Dilutions

WB 1:500 - 1:2000

Immunogen Information

Gene ID

106021

Swiss Prot

Q80Z37

Immunogen

A synthetic peptide corresponding to a sequence within amino acids 100-200 of mouse Topors (NP_598858.2).

Synonyms

LUN; TP53BPL; p53BP3/LUN; Topors

Contact



www.abclonal.com

Product Information

Source

Rabbit

Isotype

IgG

Purification

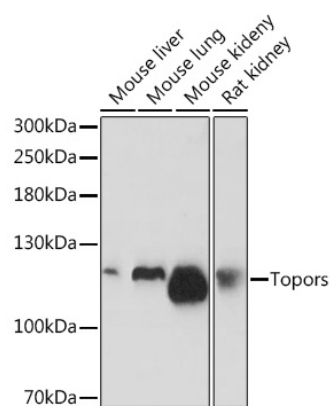
Affinity purification

Storage

Store at -20°C. Avoid freeze / thaw cycles.

Buffer: PBS with 0.01% thimerosal, 50% glycerol, pH7.3.

Validation Data



Western blot analysis of various lysates using Topors Rabbit pAb (A18526) at 1:1000 dilution.

Secondary antibody: HRP Goat Anti-Rabbit IgG (H+L) (AS014) at 1:10000 dilution.

Lysates/proteins: 25µg per lane.

Blocking buffer: 3% nonfat dry milk in TBST.

Detection: ECL Basic Kit (RM00020).

Exposure time: 3min.