

A18473

Leader in Biomolecular Solutions for Life Science



# ADCY10 Rabbit pAb

Catalog No.: A18473

1 Publications

## Basic Information

### Observed MW

48kDa

### Calculated MW

187kDa

### Category

Polyclonal Antibody

### Applications

WB,ELISA

### Cross-Reactivity

Human,Mouse

## Background

The protein encoded by this gene belongs to a distinct class of adenylyl cyclases that is soluble and insensitive to G protein or forskolin regulation. Activity of this protein is regulated by bicarbonate. Variation at this gene has been observed in patients with absorptive hypercalciuria. Alternatively spliced transcript variants encoding different isoforms have been observed. There is a pseudogene of this gene on chromosome 6.

## Recommended Dilutions

**WB** 1:500 - 1:1000

**ELISA** Recommended starting concentration is 1 µg/mL. Please optimize the concentration based on your specific assay requirements.

## Immunogen Information

### Gene ID

55811

### Swiss Prot

Q96PN6

### Immunogen

Recombinant protein (or fragment). This information is considered to be commercially sensitive.

### Synonyms

SAC; HCA2; SACI; Sacy; hsAC; HEL-S-7a; ADCY10

## Contact

 [www.abclonal.com](http://www.abclonal.com)

## Product Information

### Source

Rabbit

### Isotype

IgG

### Purification

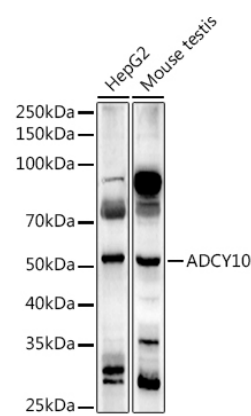
Affinity purification

### Storage

Store at -20°C. Avoid freeze / thaw cycles.

Buffer: PBS with 0.01% thimerosal, 50% glycerol, pH7.3.

Validation Data



Western blot analysis of various lysates using ADCY10 Rabbit pAb (A18473) at 1:1000 dilution.  
Secondary antibody: HRP-conjugated Goat anti-Rabbit IgG (H+L) (AS014) at 1:10000 dilution.  
Lysates/proteins: 25µg per lane.  
Blocking buffer: 3% nonfat dry milk in TBST.  
Detection: ECL Basic Kit (RM00020).  
Exposure time: 180s.