

A18380

Leader in Biomolecular Solutions for Life Science



## SLC5A3 Rabbit pAb

Catalog No.: A18380

### Basic Information

#### Observed MW

80kDa

#### Calculated MW

80kDa

#### Category

Polyclonal Antibody

#### Applications

WB, ELISA

#### Cross-Reactivity

Human, Mouse, Rat

### Background

Enables potassium channel regulator activity and transmembrane transporter binding activity. Predicted to be involved in inositol metabolic process; monosaccharide transmembrane transport; and myo-inositol import across plasma membrane. Predicted to act upstream of or within several processes, including peripheral nervous system development; positive regulation of reactive oxygen species biosynthetic process; and regulation of respiratory gaseous exchange. Located in plasma membrane. Part of perinuclear region of cytoplasm.

### Recommended Dilutions

**WB** 1:500 - 1:2000

**ELISA** Recommended starting concentration is 1 µg/mL. Please optimize the concentration based on your specific assay requirements.

### Immunogen Information

#### Gene ID

6526

#### Swiss Prot

P53794

#### Immunogen

Recombinant protein (or fragment). This information is considered to be commercially sensitive.

#### Synonyms

BCW2; SMIT; SMIT1; SMIT2; SLC5A3

### Contact

 [www.abclonal.com](http://www.abclonal.com)

### Product Information

#### Source

Rabbit

#### Isotype

IgG

#### Purification

Affinity purification

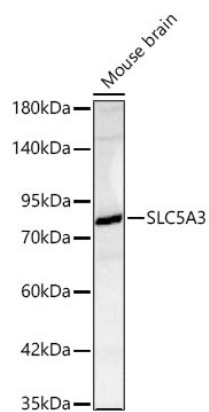
#### Storage

Store at -20°C. Avoid freeze / thaw cycles.

Buffer: PBS with 0.09% Sodium azide, 50% glycerol, pH 7.3.

## Validation Data

---



Western blot analysis of lysates from Mouse brain using SLC5A3 Rabbit pAb (A18380) at 1:2000 dilution.

Secondary antibody:(AS014 ) at 1:10000 dilution.

Lysates/proteins: 25 µg per lane.

Blocking buffer: 3% nonfat dry milk in TBST.

Detection: ECL Basic Kit (RM00020).

Exposure time: 5s.