

A18347

Leader in Biomolecular Solutions for Life Science



PCIF1 Rabbit pAb

Catalog No.: A18347

Basic Information

Observed MW

80kDa

Calculated MW

81kDa

Category

Polyclonal Antibody

Applications

WB,IHC-P,ELISA

Cross-Reactivity

Human,Mouse,Rat

Background

Enables RNA polymerase II C-terminal domain phosphoserine binding activity; S-adenosyl-L-methionine binding activity; and mRNA (2'-O-methyladenosine-N6-)-methyltransferase activity. Involved in mRNA methylation; negative regulation of translation; and positive regulation of translation. Located in intercellular bridge; microtubule cytoskeleton; and nucleoplasm.

Recommended Dilutions

WB 1:1000 - 1:5000

IHC-P 1:50 - 1:200

ELISA Recommended starting concentration is 1 µg/mL. Please optimize the concentration based on your specific assay requirements.

Immunogen Information

Gene ID

63935

Swiss Prot

Q9H4Z3

Immunogen

Recombinant fusion protein containing a sequence corresponding to amino acids 1-200 of human PCIF1 (NP_071387.1).

Synonyms

CAPAM; hCAPAM; hPCIF1; C20orf67; PPP1R121; PCIF1

Contact



www.abclonal.com

Product Information

Source

Rabbit

Isotype

IgG

Purification

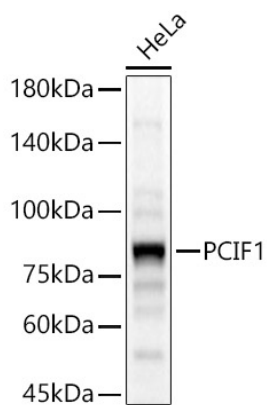
Affinity purification

Storage

Store at -20°C. Avoid freeze / thaw cycles.

Buffer: PBS with 0.05% proclin300,50% glycerol,pH7.3.

Validation Data



Western blot analysis of lysates from HeLa cells, using PCIF1 Rabbit pAb (A18347) at 1:2000 dilution.

Secondary antibody: HRP-conjugated Goat anti-Rabbit IgG (H+L) (AS014) at 1:10000 dilution.

Lysates/proteins: 25µg per lane.

Blocking buffer: 3% nonfat dry milk in TBST.

Detection: ECL Basic Kit (RM00020).

Exposure time: 20s.