

A18334

Leader in Biomolecular Solutions for Life Science



Ms4a4a Rabbit pAb

Catalog No.: A18334

Basic Information

Observed MW

27kDa

Calculated MW

Category

Polyclonal Antibody

Applications

WB,ELISA

Cross-Reactivity

Mouse

Background

Predicted to be located in Golgi apparatus; endoplasmic reticulum; and plasma membrane raft. Orthologous to human MS4A4A (membrane spanning 4-domains A4A).

Recommended Dilutions

WB 1:500 - 1:2000

ELISA Recommended starting concentration is 1 µg/mL. Please optimize the concentration based on your specific assay requirements.

Immunogen Information

Gene ID

666907

Swiss Prot

Immunogen

A synthetic peptide corresponding to a sequence within amino acids 150-236 of mouse Ms4a4a (NP_001297260.1).

Synonyms

EG666907; Ms4a4a

Contact

 www.abclonal.com

Product Information

Source

Rabbit

Isotype

IgG

Purification

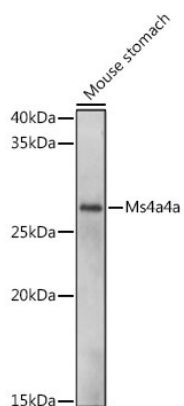
Affinity purification

Storage

Store at -20°C. Avoid freeze / thaw cycles.

Buffer: PBS with 0.01% thimerosal, 50% glycerol, pH7.3.

Validation Data



Western blot analysis of lysates from Mouse stomach, using Ms4a4a Rabbit pAb (A18334) at 1:1000 dilution.

Secondary antibody: HRP-conjugated Goat anti-Rabbit IgG (H+L) (AS014) at 1:10000 dilution.

Lysates/proteins: 25µg per lane.

Blocking buffer: 3% nonfat dry milk in TBST.

Detection: ECL Basic Kit (RM00020).

Exposure time: 10s.