

A18296

Leader in Biomolecular Solutions for Life Science



# Pan DiMethyl-lysine Rabbit pAb

Catalog No.: A18296

1 Publications

## Basic Information

### Observed MW

17-48kDa

### Calculated MW

### Category

Polyclonal Antibody

### Applications

WB,ELISA

### Cross-Reactivity

Human,Mouse,Rat

## Background

The lysine methylation chemical reaction is the reversible addition of one, two or three methyl groups to the  $\epsilon$ -nitrogen of a lysine side chain, forming monomethylated, dimethylated and trimethylated derivatives (referred to here as 'Kme1' , 'Kme2' and 'Kme3' ).

## Recommended Dilutions

**WB** 1:500 - 1:2000

**ELISA** Recommended starting concentration is 1  $\mu$ g/mL. Please optimize the concentration based on your specific assay requirements.

## Immunogen Information

### Gene ID

### Swiss Prot

### Immunogen

Synthetic peptide. This information is considered to be commercially sensitive.

### Synonyms

## Contact

 [www.abclonal.com](http://www.abclonal.com)

## Product Information

### Source

Rabbit

### Isotype

IgG

### Purification

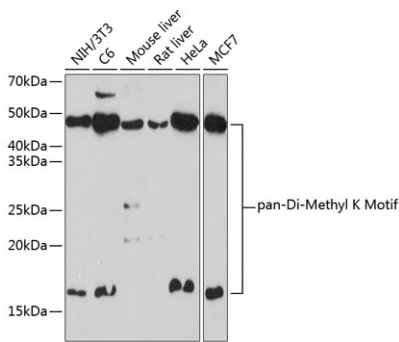
Affinity purification

### Storage

Store at -20°C. Avoid freeze / thaw cycles.

Buffer: PBS with 0.01% thimerosal, 50% glycerol, pH7.3.

# Validation Data



Western blot analysis of various lysates using Pan DiMethyl-lysine Rabbit pAb (A18296) at 1:1000 dilution.  
Secondary antibody: HRP-conjugated Goat anti-Rabbit IgG (H+L) (AS014) at 1:10000 dilution.  
Lysates/proteins: 25µg per lane.  
Blocking buffer: 3% nonfat dry milk in TBST.  
Detection: ECL Basic Kit (RM00020).  
Exposure time: 3min.