

A18261

Leader in Biomolecular Solutions for Life Science



# pan-Symmetric Di-Methyl Arginine Rabbit pAb

Catalog No.: A18261

2 Publications

## Basic Information

### Observed MW

22-70kDa

### Calculated MW

### Category

Polyclonal Antibody

### Applications

WB,ELISA

### Cross-Reactivity

Human,Mouse,Rat,Other (Wide Range Predicted)

## Background

The methylation of arginine residues in proteins is a post-translational modification that contributes to a wide range of biological processes. Many cytokines involved in T cell development and activation utilize the common cytokine receptor  $\gamma$ -chain ( $\gamma c$ ) and the kinase JAK3 for signal transduction.

## Recommended Dilutions

**WB** 1:100 - 1:500

**ELISA** Recommended starting concentration is 1  $\mu$ g/mL. Please optimize the concentration based on your specific assay requirements.

## Immunogen Information

**Gene ID**

**Swiss Prot**

### Immunogen

A synthetic peptide corresponding to a sequence containing methylated R.

### Synonyms

## Contact



[www.abclonal.com](http://www.abclonal.com)

## Product Information

**Source**

Rabbit

**Isotype**

IgG

**Purification**

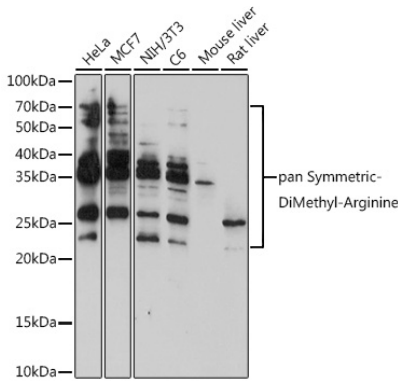
Affinity purification

### Storage

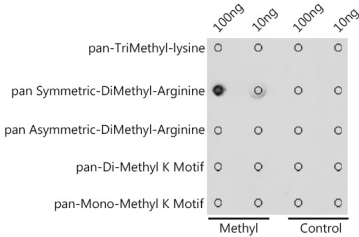
Store at  $-20^{\circ}\text{C}$ . Avoid freeze / thaw cycles.

Buffer: PBS with 0.09% sodium azide,50% glycerol,pH7.3.

Validation Data



Western blot analysis of various lysates using pan-Symmetric-Di-Methyl Arginine Rabbit pAb (A18261) at 1:500 dilution.  
Secondary antibody: HRP-conjugated Goat anti-Rabbit IgG (H+L) (AS014) at 1:10000 dilution.  
Lysates/proteins: 25µg per lane.  
Blocking buffer: 3% nonfat dry milk in TBST.  
Detection: ECL Basic Kit (RM00020).  
Exposure time: 180s.



Dot-blot analysis of all sorts of methylation peptides using pan Symmetric-DiMethyl-Arginine antibody (A18261) at 1:1000 dilution.