

A18256

Leader in Biomolecular Solutions for Life Science



# Tulp2 Rabbit pAb

Catalog No.: A18256

## Basic Information

### Observed MW

60kDa

### Calculated MW

63kDa

### Category

Polyclonal Antibody

### Applications

WB,IHC-P,ELISA

### Cross-Reactivity

Human,Mouse,Rat

## Background

Predicted to enable phosphoric diester hydrolase activity. Predicted to be involved in protein localization to cilium. Predicted to be located in cytoplasm and extracellular region. Predicted to be active in cilium. Is expressed in urogenital ridge. Orthologous to human TULP2 (TUB like protein 2).

## Recommended Dilutions

WB 1:500 - 1:1000

IHC-P 1:50 - 1:200

## Immunogen Information

### Gene ID

56734

### Swiss Prot

P46686

### Immunogen

Recombinant fusion protein containing a sequence corresponding to amino acids 78-305 of mouse Tulp2 (NP\_032833.2).

### Synonyms

Pdet; Tulp2

## Contact



[www.abclonal.com](http://www.abclonal.com)

## Product Information

### Source

Rabbit

### Isotype

IgG

### Purification

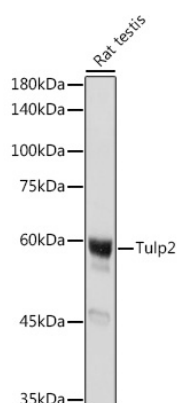
Affinity purification

### Storage

Store at -20°C. Avoid freeze / thaw cycles.

Buffer: PBS with 0.01% thimerosal, 50% glycerol, pH7.3.

## Validation Data



Western blot analysis of lysates from Rat testis, using Tulp2 Rabbit pAb (A18256) at 1:1000 dilution.

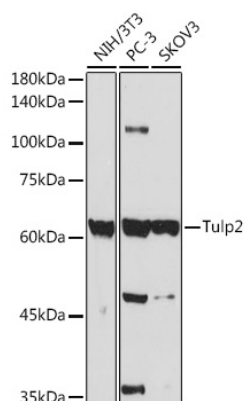
Secondary antibody: HRP Goat Anti-Rabbit IgG (H+L) (AS014) at 1:10000 dilution.

Lysates/proteins: 25µg per lane.

Blocking buffer: 3% nonfat dry milk in TBST.

Detection: ECL Basic Kit (RM00020).

Exposure time: 1s.



Western blot analysis of various lysates using Tulp2 Rabbit pAb (A18256) at 1:1000 dilution.

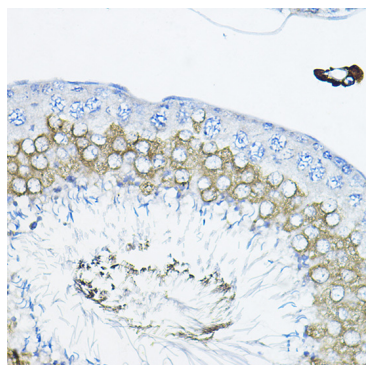
Secondary antibody: HRP Goat Anti-Rabbit IgG (H+L) (AS014) at 1:10000 dilution.

Lysates/proteins: 25µg per lane.

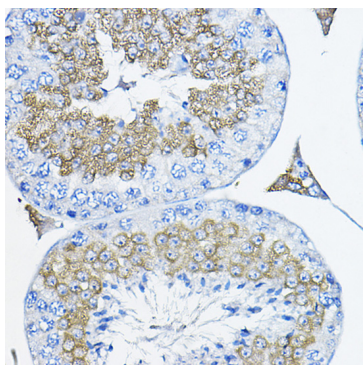
Blocking buffer: 3% nonfat dry milk in TBST.

Detection: ECL Enhanced Kit (RM00021).

Exposure time: 30s.



Immunohistochemistry analysis of paraffin-embedded rat testis using Tulp2 Rabbit pAb (A18256) at dilution of 1:200 (40x lens). Perform high pressure antigen retrieval with 10 mM citrate buffer pH 6.0 before commencing with IHC staining protocol.



Immunohistochemistry analysis of paraffin-embedded mouse testis using Tulp2 Rabbit pAb (A18256) at dilution of 1:200 (40x lens). Perform high pressure antigen retrieval with 10 mM citrate buffer pH 6.0 before commencing with IHC staining protocol.