

A18246

Leader in Biomolecular Solutions for Life Science



# MOB1A/MOB1B Rabbit pAb

Catalog No.: A18246

## Basic Information

### Observed MW

24kDa

### Calculated MW

### Category

Polyclonal Antibody

### Applications

WB,IF/ICC,ELISA

### Cross-Reactivity

Human,Mouse,Rat

## Background

The protein MOB1 is considered to be one of the core components of the mammalian Hippo signaling pathway, which controls organ size and tumor growth by enhancing apoptosis. Loss of the encoded protein results in cell proliferation and cancer formation. The encoded protein is also involved in the control of microtubule stability during cytokinesis. MOB1A and MOB1B, which have 95% sequence identity, play redundant biological roles and are both termed MOB1.

## Recommended Dilutions

**WB** 1:500 - 1:2000

**IF/ICC** 1:50 - 1:200

**ELISA** Recommended starting concentration is 1 µg/mL. Please optimize the concentration based on your specific assay requirements.

## Immunogen Information

**Gene ID**  
55233/92597

**Swiss Prot**  
Q9H8S9/Q7I9L4

### Immunogen

Synthetic peptide. This information is considered to be commercially sensitive.

### Synonyms

MOB1A/MOB1B

## Contact

 [www.abclonal.com](http://www.abclonal.com)

## Product Information

**Source**  
Rabbit

**Isotype**  
IgG

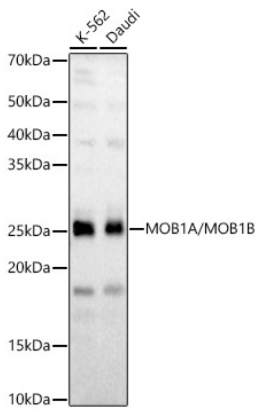
**Purification**  
Affinity purification

### Storage

Store at -20°C. Avoid freeze / thaw cycles.

Buffer: PBS containing 50% glycerol, preserved with proclin300 or sodium azide (as specified on the Certificate of Analysis), pH 7.3.

## Validation Data



Western blot analysis of various lysates, using MOB1A/MOB1B Rabbit pAb (A18246) at 1:1500 dilution.

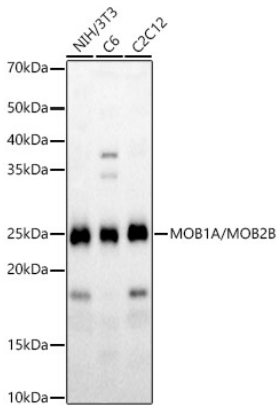
Secondary antibody: HRP-conjugated Goat anti-Rabbit IgG (H+L) (AS014) at 1:10000 dilution.

Lysates/proteins: 25µg per lane.

Blocking buffer: 3% nonfat dry milk in TBST.

Detection: ECL Basic Kit (RM00020).

Exposure time: 10s.



Western blot analysis of various lysates, using MOB1A/MOB2B Rabbit pAb (A18246) at 1:1500 dilution.

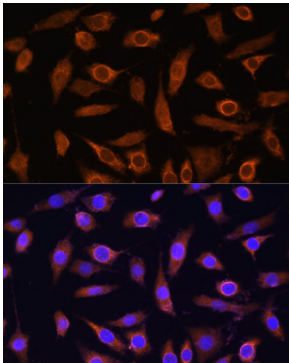
Secondary antibody: HRP-conjugated Goat anti-Rabbit IgG (H+L) (AS014) at 1:10000 dilution.

Lysates/proteins: 25µg per lane.

Blocking buffer: 3% nonfat dry milk in TBST.

Detection: ECL Basic Kit (RM00020).

Exposure time: 30s.



Immunofluorescence analysis of L929 cells using MOB1A/MOB1B Rabbit pAb (A18246) at dilution of 1:100.

Secondary antibody: Cy3-conjugated Goat anti-Rabbit IgG (H+L) (AS007) at 1:500 dilution. Blue: DAPI for nuclear staining.