

A18244

Leader in Biomolecular Solutions for Life Science



Mrpl55 Rabbit pAb

Catalog No.: A18244

Basic Information

Observed MW

13-14kDa

Calculated MW

15kDa

Category

Polyclonal Antibody

Applications

WB,ELISA

Cross-Reactivity

Human,Mouse

Background

Predicted to be a structural constituent of ribosome. Predicted to be involved in translation. Located in mitochondrion. Is expressed in several structures, including early conceptus; gonad; heart; liver; and metanephros. Orthologous to human MRPL55 (mitochondrial ribosomal protein L55).

Recommended Dilutions

WB 1:500 - 1:2000

Immunogen Information

Gene ID

67212

Swiss Prot

Q9CZ83

Immunogen

Recombinant fusion protein containing a sequence corresponding to amino acids 33-127 of mouse Mrpl55 (NP_001289265.1).

Synonyms

L55mt; MRP-L55; 2810038N09Rik; Mrpl55

Contact

 www.abclonal.com

Product Information

Source

Rabbit

Isotype

IgG

Purification

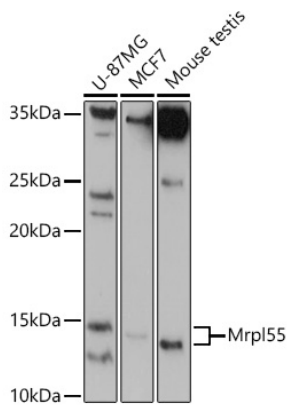
Affinity purification

Storage

Store at -20°C. Avoid freeze / thaw cycles.

Buffer: PBS with 0.01% thimerosal, 50% glycerol, pH7.3.

Validation Data



Western blot analysis of various lysates using Mrp15 Rabbit pAb (A18244) at 1:1000 dilution.

Secondary antibody: HRP Goat Anti-Rabbit IgG (H+L) (AS014) at 1:10000 dilution.

Lysates/proteins: 25µg per lane.

Blocking buffer: 3% nonfat dry milk in TBST.

Detection: ECL Basic Kit (RM00020).

Exposure time: 90s.