

A18237

Leader in Biomolecular Solutions for Life Science



# BRINP3 Rabbit pAb

Catalog No.: A18237

## Basic Information

---

### Observed MW

88kDa

### Calculated MW

88kDa

### Category

Polyclonal Antibody

### Applications

WB,IF/ICC,ELISA

### Cross-Reactivity

Human,Mouse,Rat

## Background

---

This gene is overexpressed in pituitary tumors but is underexpressed in tongue squamous cell carcinomas, ulcerative colitis, and peri-implantitis. Polymorphisms that increase expression of this gene have been shown to increase vascular inflammation, and an association of this gene with myocardial infarction has been demonstrated. Finally, hypermethylation of this gene may find usefulness as a biomarker for gastric cancer. Two transcript variants encoding different isoforms have been found for this gene.

## Recommended Dilutions

---

WB 1:500 - 1:2000

IF/ICC 1:50 - 1:200

## Immunogen Information

---

### Gene ID

339479

### Swiss Prot

Q76B58

### Immunogen

Recombinant fusion protein containing a sequence corresponding to amino acids 240-500 of human BRINP3 (NP\_950252.1).

### Synonyms

FAM5C; DBCCR1L; DBCCR1L1; BRINP3

## Contact

---



[www.abclonal.com](http://www.abclonal.com)

## Product Information

---

### Source

Rabbit

### Isotype

IgG

### Purification

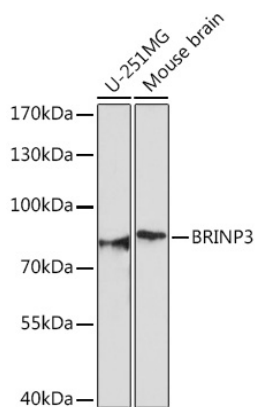
Affinity purification

### Storage

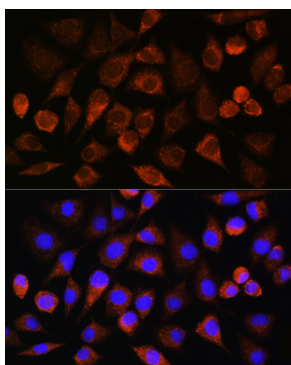
Store at -20°C. Avoid freeze / thaw cycles.

Buffer: PBS with 0.01% thimerosal,50% glycerol,pH7.3.

## Validation Data



Western blot analysis of various lysates using BRINP3 Rabbit pAb (A18237) at 1:1000 dilution.  
Secondary antibody: HRP Goat Anti-Rabbit IgG (H+L) (AS014) at 1:10000 dilution.  
Lysates/proteins: 25 $\mu$ g per lane.  
Blocking buffer: 3% nonfat dry milk in TBST.  
Detection: ECL Basic Kit (RM00020).  
Exposure time: 90s.



Immunofluorescence analysis of L929 cells using BRINP3 Rabbit pAb (A18237) at dilution of 1:100. Secondary antibody: Cy3 Goat Anti-Rabbit IgG (H+L) (AS007) at 1:500 dilution. Blue: DAPI for nuclear staining.