

A18224

Leader in Biomolecular Solutions for Life Science



# HSPB11 Rabbit pAb

Catalog No.: A18224

## Basic Information

### Observed MW

16kDa

### Calculated MW

16kDa

### Category

Polyclonal Antibody

### Applications

WB,IHC-P,IF/ICC,ELISA

### Cross-Reactivity

Human,Mouse,Rat

## Background

Predicted to enable metal ion binding activity. Predicted to be involved in kidney development and spermatogenesis. Predicted to act upstream of or within animal organ development; left/right axis specification; and skeletal system development. Predicted to be located in ciliary tip. Predicted to be part of intraciliary transport particle B. Predicted to be active in centrosome and cilium.

## Recommended Dilutions

<b>WB</b>	1:500 - 1:2000
<b>IHC-P</b>	1:50 - 1:200
<b>IF/ICC</b>	1:50 - 1:200

## Immunogen Information

<b>Gene ID</b>	<b>Swiss Prot</b>
51668	Q9Y547

### Immunogen

Recombinant fusion protein containing a sequence corresponding to amino acids 1-144 of human HSPB11 (NP\_057210.2).

### Synonyms

PP25; FAP232; HSPB11; C1orf41; CFAP232; HSPCO34

## Contact

 [www.abclonal.com](http://www.abclonal.com)

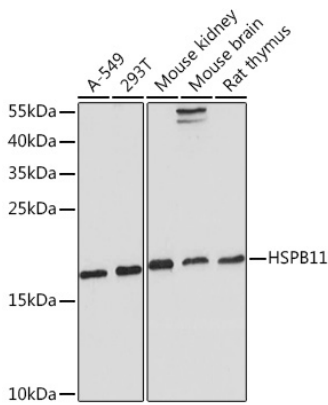
## Product Information

<b>Source</b>	<b>Isotype</b>	<b>Purification</b>
Rabbit	IgG	Affinity purification

### Storage

Store at -20°C. Avoid freeze / thaw cycles.  
Buffer: PBS with 0.01% thimerosal, 50% glycerol, pH7.3.

## Validation Data



Western blot analysis of various lysates using HSPB11 Rabbit pAb (A18224) at 1:1000 dilution.

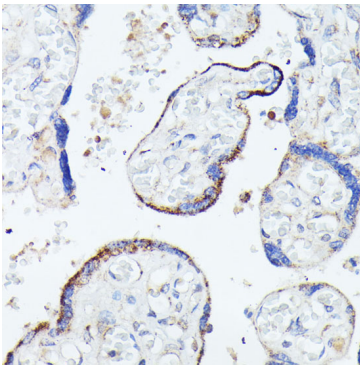
Secondary antibody: HRP Goat Anti-Rabbit IgG (H+L) (AS014) at 1:10000 dilution.

Lysates/proteins: 25µg per lane.

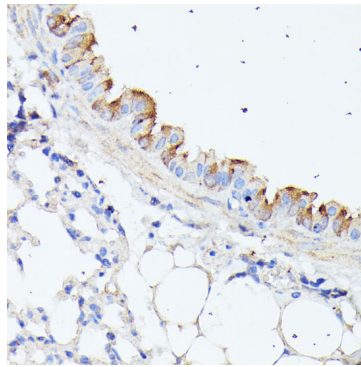
Blocking buffer: 3% nonfat dry milk in TBST.

Detection: ECL Basic Kit (RM00020).

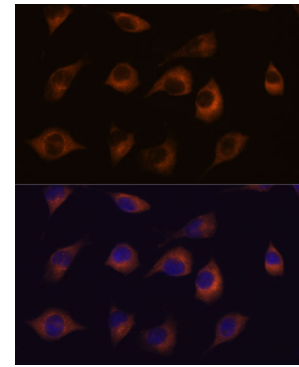
Exposure time: 180s.



Immunohistochemistry analysis of paraffin-embedded human placenta using HSPB11 Rabbit pAb (A18224) at dilution of 1:100 (40x lens). Perform microwave antigen retrieval with 10 mM PBS buffer pH 7.2 before commencing with IHC staining protocol.



Immunohistochemistry analysis of paraffin-embedded mouse lung using HSPB11 Rabbit pAb (A18224) at dilution of 1:100 (40x lens). Perform microwave antigen retrieval with 10 mM PBS buffer pH 7.2 before commencing with IHC staining protocol.



Immunofluorescence analysis of L929 cells using HSPB11 Rabbit pAb (A18224) at dilution of 1:100. Secondary antibody: Cy3 Goat Anti-Rabbit IgG (H+L) (AS007) at 1:500 dilution. Blue: DAPI for nuclear staining.