

A18199

Leader in Biomolecular Solutions for Life Science



www.abclonal.com

# K33-linkage Specific Polyubiquitin Rabbit pAb

Catalog No.: A18199

1 Publications

## Basic Information

**Observed MW**

**Calculated MW**

**Category**

Polyclonal Antibody

**Applications**

WB,ELISA,DB

**Cross-Reactivity**

Human,Mouse,Rat

## Background

This gene encodes ubiquitin, one of the most conserved proteins known. Ubiquitin has a major role in targeting cellular proteins for degradation by the 26S proteasome. It is also involved in the maintenance of chromatin structure, the regulation of gene expression, and the stress response. Ubiquitin is synthesized as a precursor protein consisting of either polyubiquitin chains or a single ubiquitin moiety fused to an unrelated protein. This gene consists of three direct repeats of the ubiquitin coding sequence with no spacer sequence. Consequently, the protein is expressed as a polyubiquitin precursor with a final amino acid after the last repeat. An aberrant form of this protein has been detected in patients with Alzheimer's disease and Down syndrome. Pseudogenes of this gene are located on chromosomes 1, 2, 13, and 17. Alternative splicing results in multiple transcript variants.

## Recommended Dilutions

**WB** 1:500 - 1:2000

**DB** 1:500 - 1:1000

**ELISA** Recommended starting concentration is 1 µg/mL. Please optimize the concentration based on your specific assay requirements.

## Immunogen Information

**Gene ID**

**Swiss Prot**

**Immunogen**

A synthetic peptide corresponding to a sequence containing polyubiquitinated protein (K33 linkage).

**Synonyms**

## Contact



[www.abclonal.com](http://www.abclonal.com)

## Product Information

**Source**

Rabbit

**Isotype**

IgG

**Purification**

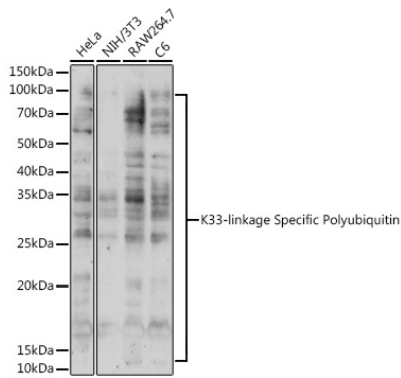
Affinity purification

**Storage**

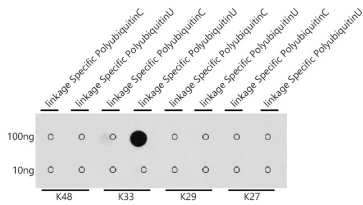
Store at -20°C. Avoid freeze / thaw cycles.

Buffer: PBS with 0.05% proclin300,50% glycerol,pH7.3.

## Validation Data



Western blot analysis of various lysates using K33-linkage Specific Polyubiquitin Rabbit pAb (A18199) at 1:500 dilution.  
 Secondary antibody: HRP-conjugated Goat anti-Rabbit IgG (H+L) (AS014) at 1:10000 dilution.  
 Lysates/proteins: 25µg per lane.  
 Blocking buffer: 3% nonfat dry milk in TBST.  
 Detection: ECL Enhanced Kit (RM00021).  
 Exposure time: 90s.



Dot-blot analysis of all sorts of peptides using K33-linkage Specific Polyubiquitin antibody (A18199) at 1:1000 dilution.