

A18198

Leader in Biomolecular Solutions for Life Science



K29-linkage Specific Polyubiquitin Rabbit pAb

Catalog No.: A18198

Basic Information

Observed MW

Calculated MW

Category

Polyclonal Antibody

Applications

WB,ELISA,DB

Cross-Reactivity

Human,Mouse,Rat,Other (Wide Range Predicted)

Background

Polyubiquitin chains regulate diverse cellular processes through the ability of ubiquitin to form chains of eight different linkage types. when attached to a target protein, have different functions depending on the Lys residue of the ubiquitin that is linked. K29-linked ubiquitination is involved in different kinds of cellular proteotoxic stress response as well as cell cycle regulation. In particular, K29-linked ubiquitination is enriched in the midbody and downregulation of the K29-linked ubiquitination signal arrests cells in G1/S phase.

Recommended Dilutions

WB 1:500 - 1:2000

DB 1:500 - 1:1000

ELISA Recommended starting concentration is 1 µg/mL. Please optimize the concentration based on your specific assay requirements.

Immunogen Information

Gene ID

Swiss Prot

Immunogen

A synthetic peptide corresponding to a sequence containing polyubiquitinated protein (K29 linkage).

Synonyms

Contact

 www.abclonal.com

Product Information

Source

Rabbit

Isotype

IgG

Purification

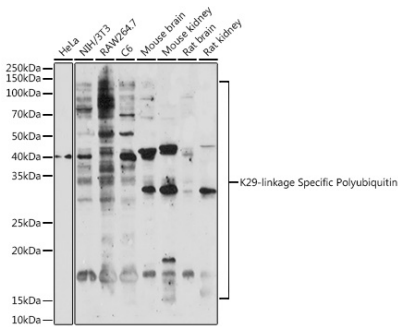
Affinity purification

Storage

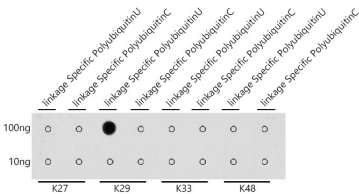
Store at -20°C. Avoid freeze / thaw cycles.

Buffer: PBS with 0.09% sodium azide,50% glycerol,pH7.3.

Validation Data



Western blot analysis of various lysates using K29-linkage Specific Polyubiquitin Rabbit pAb (A18198) at 1:500 dilution.
Secondary antibody: HRP-conjugated Goat anti-Rabbit IgG (H+L) (AS014) at 1:10000 dilution.
Lysates/proteins: 25µg per lane.
Blocking buffer: 3% nonfat dry milk in TBST.
Detection: ECL Enhanced Kit (RM00021).
Exposure time: 90s.



Dot-blot analysis of all sorts of peptides using K29-linkage Specific Polyubiquitin antibody (A18198) at 1:1000 dilution.