

A18186

Leader in Biomolecular Solutions for Life Science



Mrpl18 Rabbit pAb

Catalog No.: A18186

Basic Information

Observed MW

18kDa

Calculated MW

21kDa

Category

Polyclonal Antibody

Applications

WB,ELISA

Cross-Reactivity

Human,Mouse

Background

Predicted to enable 5S rRNA binding activity. Predicted to be involved in rRNA import into mitochondrion. Located in mitochondrion. Is expressed in several structures, including brain; connective tissue; early conceptus; genitourinary system; and gut. Orthologous to human MRPL18 (mitochondrial ribosomal protein L18).

Recommended Dilutions

WB 1:500 - 1:2000

ELISA Recommended starting concentration is 1 µg/mL. Please optimize the concentration based on your specific assay requirements.

Immunogen Information

Gene ID

67681

Swiss Prot

Q9CQL5

Immunogen

Recombinant protein (or fragment). This information is considered to be commercially sensitive.

Synonyms

HSPC071; MRP-L18; 1010001C05Rik; Mrpl18

Contact



www.abclonal.com

Product Information

Source

Rabbit

Isotype

IgG

Purification

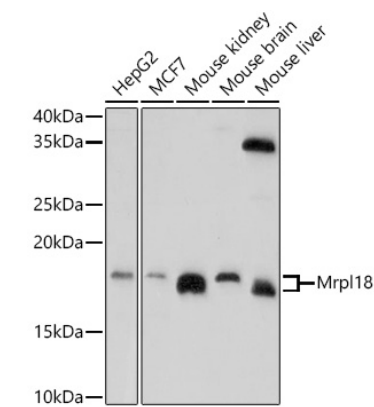
Affinity purification

Storage

Store at -20°C. Avoid freeze / thaw cycles.

Buffer: PBS with 0.01% thimerosal, 50% glycerol, pH 7.3.

Validation Data



Western blot analysis of various lysates using Mrpl18 Rabbit pAb (A18186) at 1:1000 dilution.
Secondary antibody: HRP-conjugated Goat anti-Rabbit IgG (H+L) (AS014) at 1:10000 dilution.
Lysates/proteins: 25µg per lane.
Blocking buffer: 3% nonfat dry milk in TBST.
Detection: ECL Enhanced Kit (RM00021).
Exposure time: 180s.