

A18183

Leader in Biomolecular Solutions for Life Science



# ZFPM1 Rabbit pAb

Catalog No.: A18183

1 Publications

## Basic Information

### Observed MW

105kDa

### Calculated MW

105kDa

### Category

Polyclonal Antibody

### Applications

WB,IF/ICC,ELISA

### Cross-Reactivity

Human,Mouse,Rat

## Background

Enables RNA polymerase II-specific DNA-binding transcription factor binding activity and transcription corepressor activity. Involved in platelet formation; regulation of definitive erythrocyte differentiation; and regulation of gene expression. Part of transcription repressor complex.

## Recommended Dilutions

**WB** 1:500 - 1:1000

**IF/ICC** 1:50 - 1:200

**ELISA** Recommended starting concentration is 1 µg/mL. Please optimize the concentration based on your specific assay requirements.

## Immunogen Information

### Gene ID

161882

### Swiss Prot

Q8IX07

### Immunogen

Recombinant protein (or fragment). This information is considered to be commercially sensitive.

### Synonyms

FOG; FOG1; ZNF408; ZNF89A; ZC2HC11A; ZFPM1

## Contact

 [www.abclonal.com](http://www.abclonal.com)

## Product Information

### Source

Rabbit

### Isotype

IgG

### Purification

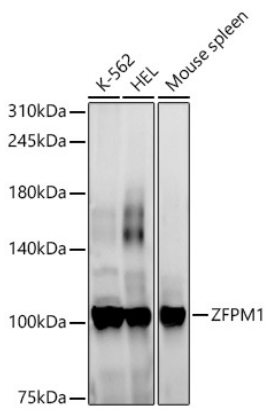
Affinity purification

### Storage

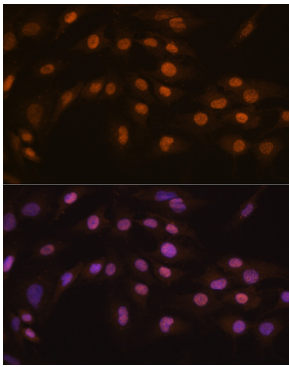
Store at -20°C. Avoid freeze / thaw cycles.

Buffer: PBS containing 50% glycerol, preserved with proclin300 or sodium azide (as specified on the Certificate of Analysis), pH 7.3.

## Validation Data



Western blot analysis of various lysates, using ZFPM1 Rabbit pAb (A18183) at 1:900 dilution.  
Secondary antibody: HRP-conjugated Goat anti-Rabbit IgG (H+L) (AS014) at 1:10000 dilution.  
Lysates/proteins: 25µg per lane.  
Blocking buffer: 3% nonfat dry milk in TBST.  
Detection: ECL Basic Kit (RM00020).  
Exposure time: 90s.



Immunofluorescence analysis of C6 cells using ZFPM1 Rabbit pAb (A18183) at dilution of 1:100 (40x lens). Secondary antibody: Cy3-conjugated Goat anti-Rabbit IgG (H+L) (AS007) at 1:500 dilution. Blue: DAPI for nuclear staining.