

A18164

Leader in Biomolecular Solutions for Life Science



K63-linkage Specific Polyubiquitin Rabbit pAb

Catalog No.: A18164

7 Publications

Basic Information

Observed MW

15-200kDa

Calculated MW

Category

Polyclonal Antibody

Applications

ELISA, DB

Cross-Reactivity

Human, Mouse, Rat, Other (Wide Range Predicted)

Background

Ubiquitination, one type of the most common post-translational modification, mediates the regulation of protein homeostasis in vivo. Since ubiquitin itself contains multiple lysine residues and one N-terminal free amino group, eight types of ubiquitin chains can be formed. K63-linked polyubiquitin chains exert nonproteolytic functions in vivo, such as protein trafficking, kinase/phosphatase activation, and DNA damage control, all of which might be important in regulation of cancer survival and development (PMID: 19217402 , PMCID: PMC3008764) .

Recommended Dilutions

DB 1:500 - 1:1000

ELISA Recommended starting concentration is 1 µg/mL. Please optimize the concentration based on your specific assay requirements.

Immunogen Information

Gene ID

Swiss Prot

Immunogen

Synthetic peptide. This information is considered to be commercially sensitive.

Synonyms

Contact

 www.abclonal.com

Product Information

Source

Rabbit

Isotype

IgG

Purification

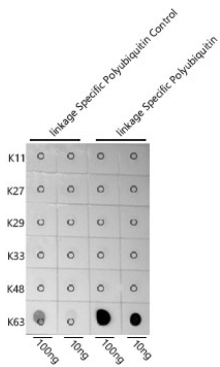
Affinity purification

Storage

Store at -20°C. Avoid freeze / thaw cycles.

Buffer: PBS containing 50% glycerol, preserved with proclin300 or sodium azide (as specified on the Certificate of Analysis), pH 7.3.

Validation Data



Dot-blot analysis of all sorts of peptides using K63-linkage Specific Polyubiquitin antibody (A18164) at 1:1000 dilution.