

A18142

Leader in Biomolecular Solutions for Life Science



## RAB11FIP5 Rabbit pAb

Catalog No.: A18142

2 Publications

### Basic Information

#### Observed MW

70-90kDa

#### Calculated MW

70kDa

#### Category

Polyclonal Antibody

#### Applications

WB,IF/ICC,ELISA

#### Cross-Reactivity

Human,Mouse,Rat

### Background

Enables gamma-tubulin binding activity. Involved in cellular response to acidic pH; negative regulation of adiponectin secretion; and regulation of protein localization to cell surface. Located in centriolar satellite and mitochondrial outer membrane.

### Recommended Dilutions

**WB** 1:500 - 1:1000

**IF/ICC** 1:50 - 1:200

**ELISA** Recommended starting concentration is 1 µg/mL. Please optimize the concentration based on your specific assay requirements.

### Immunogen Information

#### Gene ID

26056

#### Swiss Prot

Q9BXF6

#### Immunogen

Recombinant fusion protein containing a sequence corresponding to amino acids 354-653 of human RAB11FIP5 (NP\_056285.1).

#### Synonyms

GAF1; pp75; RIP11; gaf-1; rab11-FIP5; RAB11FIP5

### Contact



[www.abclonal.com](http://www.abclonal.com)

### Product Information

#### Source

Rabbit

#### Isotype

IgG

#### Purification

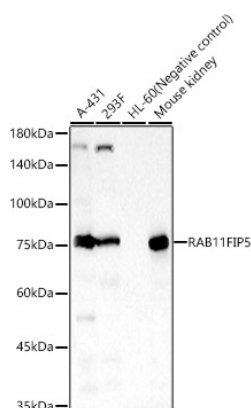
Affinity purification

#### Storage

Store at -20°C. Avoid freeze / thaw cycles.

Buffer: PBS with 0.05% proclin300,50% glycerol,pH7.3.

## Validation Data



Western blot analysis of various lysates, using RAB11FIP5 Rabbit pAb (A18142) at 1:800 dilution.

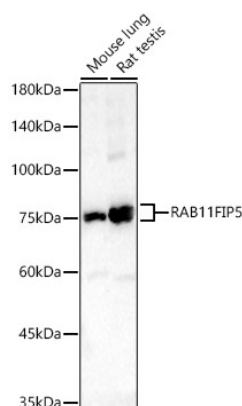
Secondary antibody: HRP-conjugated Goat anti-Rabbit IgG (H+L) (AS014) at 1:10000 dilution.

Lysates/proteins: 25µg per lane.

Blocking buffer: 3% nonfat dry milk in TBST.

Detection: ECL Basic Kit (RM00020).

Exposure time: 60s.



Western blot analysis of various lysates, using RAB11FIP5 Rabbit pAb (A18142) at 1:800 dilution.

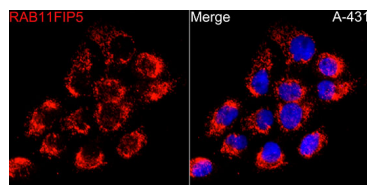
Secondary antibody: HRP-conjugated Goat anti-Rabbit IgG (H+L) (AS014) at 1:10000 dilution.

Lysates/proteins: 25µg per lane.

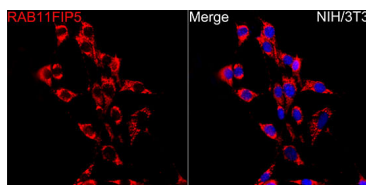
Blocking buffer: 3% nonfat dry milk in TBST.

Detection: ECL Basic Kit (RM00020).

Exposure time: 180s.



Immunofluorescence analysis of A-431 cells using RAB11FIP5 Rabbit pAb (A18142) at dilution of 1:50 (40x lens). Secondary antibody: Cy3-conjugated Goat anti-Rabbit IgG (H+L) (AS007) at 1:500 dilution. Blue: DAPI for nuclear staining.



Immunofluorescence analysis of NIH/3T3 cells using RAB11FIP5 Rabbit pAb (A18142) at dilution of 1:50 (40x lens). Secondary antibody: Cy3-conjugated Goat anti-Rabbit IgG (H+L) (AS007) at 1:500 dilution. Blue: DAPI for nuclear staining.