

A18113

Leader in Biomolecular Solutions for Life Science



ZDHHC6 Rabbit pAb

Catalog No.: A18113

Basic Information

Observed MW

56kDa

Calculated MW

48kDa

Category

Polyclonal Antibody

Applications

WB,ELISA

Cross-Reactivity

Human,Mouse,Rat

Background

Enables palmitoyltransferase activity. Involved in positive regulation of mitochondrial fusion and protein palmitoylation. Located in endoplasmic reticulum.

Recommended Dilutions

WB 1:500 - 1:2000

ELISA Recommended starting concentration is 1 µg/mL. Please optimize the concentration based on your specific assay requirements.

Immunogen Information

Gene ID

64429

Swiss Prot

Q9H6R6

Immunogen

Recombinant fusion protein containing a sequence corresponding to amino acids 279-413 of human ZDHHC6 (NP_071939.1).

Synonyms

DHHC6; DHHC-6; ZNF376; ZDHHC6

Contact



www.abclonal.com

Product Information

Source

Rabbit

Isotype

IgG

Purification

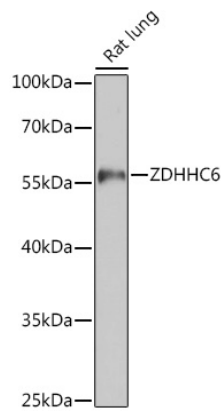
Affinity purification

Storage

Store at -20°C. Avoid freeze / thaw cycles.

Buffer: PBS with 0.01% thimerosal, 50% glycerol, pH7.3.

Validation Data



Western blot analysis of lysates from Rat lung, using ZDHHC6 Rabbit pAb (A18113) at 1:1000 dilution.

Secondary antibody: HRP-conjugated Goat anti-Rabbit IgG (H+L) (AS014) at 1:10000 dilution.

Lysates/proteins: 25µg per lane.

Blocking buffer: 3% nonfat dry milk in TBST.

Detection: ECL Basic Kit (RM00020).

Exposure time: 90s.