

A17991

Leader in Biomolecular Solutions for Life Science



MT-ND6 Rabbit pAb

Catalog No.: A17991

13 Publications

Basic Information

Observed MW

24kDa

Calculated MW

19kDa

Category

Polyclonal Antibody

Applications

WB,IHC-P,ELISA

Cross-Reactivity

Human,Mouse,Rat

Background

Enables NADH dehydrogenase (ubiquinone) activity. Involved in mitochondrial electron transport, NADH to ubiquinone and mitochondrial respiratory chain complex I assembly. Predicted to be located in mitochondrial inner membrane. Implicated in Leber hereditary optic neuropathy; Leigh disease; and spinal muscular atrophy with lower extremity predominance 2B.

Recommended Dilutions

WB 1:1000 - 1:5000

IHC-P 1:50 - 1:200

ELISA Recommended starting concentration is 1 µg/mL. Please optimize the concentration based on your specific assay requirements.

Immunogen Information

Gene ID

4541

Swiss Prot

P03923

Immunogen

Synthetic peptide. This information is considered to be commercially sensitive.

Synonyms

MTND6; ND6; MT-ND6

Contact

 www.abclonal.com

Product Information

Source

Rabbit

Isotype

IgG

Purification

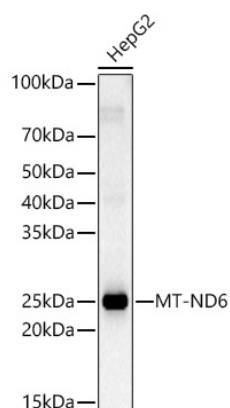
Affinity purification

Storage

Store at -20°C. Avoid freeze / thaw cycles.

Buffer: PBS with 0.09% Sodium azide, 50% glycerol, pH 7.3.

Validation Data



Western blot analysis of lysates from HepG2 cells, using MT-ND6 Rabbit pAb (A17991) at 1:2000 dilution.

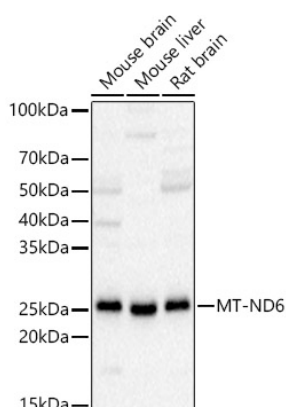
Secondary antibody: HRP-conjugated Goat anti-Rabbit IgG (H+L) (AS014) at 1:10000 dilution.

Lysates/proteins: 25µg per lane.

Blocking buffer: 3% nonfat dry milk in TBST.

Detection: ECL Basic Kit (RM00020).

Exposure time: 30s.



Western blot analysis of various lysates, using MT-ND6 Rabbit pAb (A17991) at 1:2000 dilution.

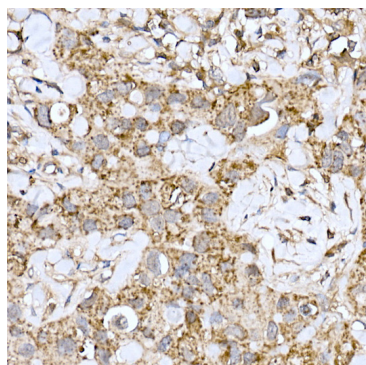
Secondary antibody: HRP-conjugated Goat anti-Rabbit IgG (H+L) (AS014) at 1:10000 dilution.

Lysates/proteins: 25µg per lane.

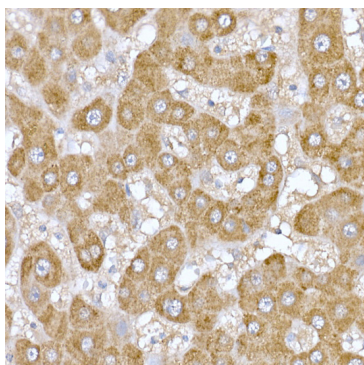
Blocking buffer: 3% nonfat dry milk in TBST.

Detection: ECL Basic Kit (RM00020).

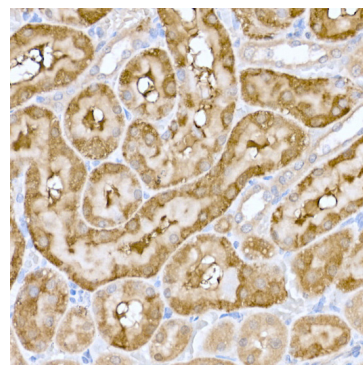
Exposure time: 0.8s.



Immunohistochemistry analysis of paraffin-embedded Human breast cancer using MT-ND6 Rabbit pAb (A17991) at dilution of 1:100 (40x lens). High pressure antigen retrieval performed with 0.01M Citrate buffer (pH 6.0) prior to IHC staining.



Immunohistochemistry analysis of paraffin-embedded Human liver using MT-ND6 Rabbit pAb (A17991) at dilution of 1:100 (40x lens). High pressure antigen retrieval performed with 0.01M Citrate buffer (pH 6.0) prior to IHC staining.



Immunohistochemistry analysis of paraffin-embedded Rat kidney using MT-ND6 Rabbit pAb (A17991) at dilution of 1:100 (40x lens). High pressure antigen retrieval performed with 0.01M Citrate buffer (pH 6.0) prior to IHC staining.