

A17987

Leader in Biomolecular Solutions for Life Science



DiMethyl-eEF1A-K55 Rabbit pAb

Catalog No.: A17987

Basic Information

Observed MW

50kDa

Calculated MW

Category

Polyclonal Antibody

Applications

WB,ELISA

Cross-Reactivity

Human

Background

Recommended Dilutions

WB 1:500 - 1:1000

ELISA Recommended starting concentration is 1 µg/mL. Please optimize the concentration based on your specific assay requirements.

Immunogen Information

Gene ID

Swiss Prot

Immunogen

A synthetic dimethylated peptide around K55 of human eEF1A (NP_001393.1).

Synonyms

Contact



www.abclonal.com

Product Information

Source

Rabbit

Isotype

IgG

Purification

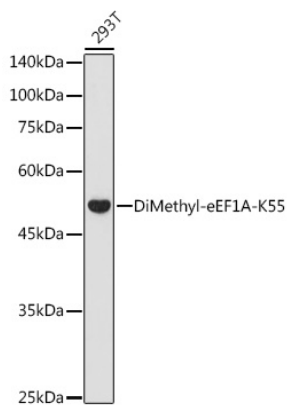
Affinity purification

Storage

Store at -20°C. Avoid freeze / thaw cycles.

Buffer: PBS with 0.01% thimerosal, 50% glycerol, pH7.3.

Validation Data



Western blot analysis of lysates from 293T cells, using DiMethyl-eEF1A-K55 Rabbit pAb (A17987) at 1:1000 dilution.

Secondary antibody: HRP-conjugated Goat anti-Rabbit IgG (H+L) (AS014) at 1:10000 dilution.

Lysates/proteins: 25µg per lane.

Blocking buffer: 3% nonfat dry milk in TBST.

Detection: ECL Basic Kit (RM00020).

Exposure time: 180s.