

A17964

Leader in Biomolecular Solutions for Life Science



PLN Rabbit pAb

Catalog No.: A17964

2 Publications

Basic Information

Observed MW

6kDa

Calculated MW

6kDa

Category

Polyclonal Antibody

Applications

WB, ELISA

Cross-Reactivity

Mouse, Rat

Background

The protein encoded by this gene is found as a pentamer and is a major substrate for the cAMP-dependent protein kinase in cardiac muscle. The encoded protein is an inhibitor of cardiac muscle sarcoplasmic reticulum Ca^{2+} -ATPase in the unphosphorylated state, but inhibition is relieved upon phosphorylation of the protein. The subsequent activation of the Ca^{2+} pump leads to enhanced muscle relaxation rates, thereby contributing to the inotropic response elicited in heart by beta-agonists. The encoded protein is a key regulator of cardiac diastolic function. Mutations in this gene are a cause of inherited human dilated cardiomyopathy with refractory congestive heart failure, and also familial hypertrophic cardiomyopathy.

Recommended Dilutions

WB 1:100 - 1:500

ELISA Recommended starting concentration is 1 $\mu\text{g/mL}$. Please optimize the concentration based on your specific assay requirements.

Immunogen Information

Gene ID

5350

Swiss Prot

P26678

Immunogen

A synthetic peptide corresponding to a sequence within amino acids 1-52 of human PLN (NP_002658.1).

Synonyms

PLB; CMD1P; CMH18; PLN

Contact



www.abclonal.com

Product Information

Source

Rabbit

Isotype

IgG

Purification

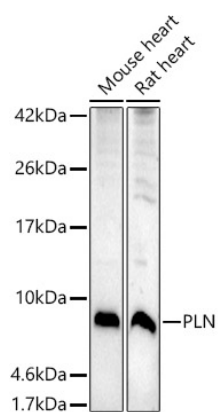
Affinity purification

Storage

Store at -20°C . Avoid freeze / thaw cycles.

Buffer: PBS with 0.05% proclin300, 50% glycerol, pH7.3.

Validation Data



Western blot analysis of various lysates using PLN Rabbit pAb (A17964) at 1:500 dilution.

Secondary antibody: HRP-conjugated Goat anti-Rabbit IgG (H+L) (AS014) at 1:10000 dilution.

Lysates/proteins: 25µg per lane.

Blocking buffer: 3% nonfat dry milk in TBST.

Detection: ECL Enhanced Kit (RM00021).

Exposure time: 180s.