

A17961

Leader in Biomolecular Solutions for Life Science



PEBP4 Rabbit pAb

Catalog No.: A17961

Basic Information

Observed MW

26kDa

Calculated MW

27kDa

Category

Polyclonal Antibody

Applications

WB,IHC-P,IF/ICC,ELISA

Cross-Reactivity

Human,Mouse,Rat

Background

Predicted to be located in extracellular region. Is expressed in bone and rib. Orthologous to human PEBP4 (phosphatidylethanolamine binding protein 4).

Recommended Dilutions

WB	1:500 - 1:2000
IHC-P	1:50 - 1:200
IF/ICC	1:50 - 1:200

Immunogen Information

Gene ID

73523

Swiss Prot

Q9D9G2

Immunogen

Recombinant fusion protein containing a sequence corresponding to amino acids 90-242 of mouse PEBP4 (NP_082836.2).

Synonyms

PEBP-4; PEBP4

Contact

 www.abclonal.com

Product Information

Source

Rabbit

Isotype

IgG

Purification

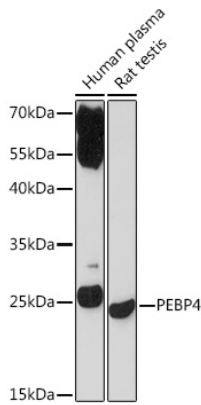
Affinity purification

Storage

Store at -20°C. Avoid freeze / thaw cycles.

Buffer: PBS with 0.01% thimerosal,50% glycerol,pH7.3.

Validation Data



Western blot analysis of various lysates using PEBP4 Rabbit pAb (A17961) at 1:1000 dilution.

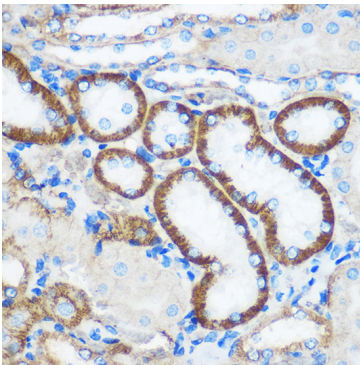
Secondary antibody: HRP Goat Anti-Rabbit IgG (H+L) (AS014) at 1:10000 dilution.

Lysates/proteins: 25µg per lane.

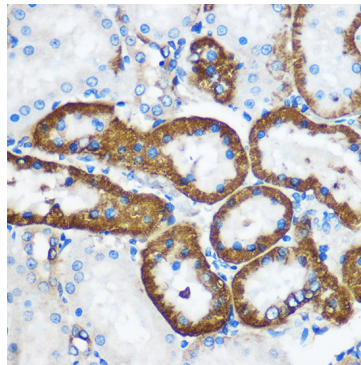
Blocking buffer: 3% nonfat dry milk in TBST.

Detection: ECL Basic Kit (RM00020).

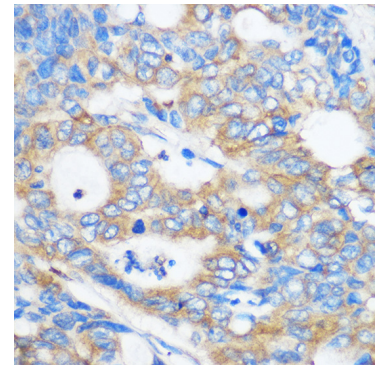
Exposure time: 3min.



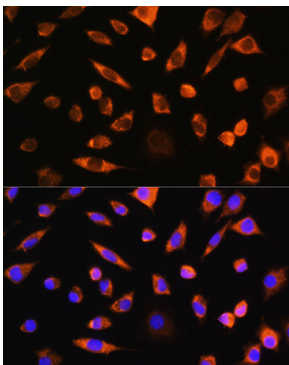
Immunohistochemistry analysis of paraffin-embedded Mouse kidney using PEBP4 Rabbit pAb (A17961) at dilution of 1:100 (40x lens). Perform microwave antigen retrieval with 10 mM PBS buffer pH 7.2 before commencing with IHC staining protocol.



Immunohistochemistry analysis of paraffin-embedded Rat kidney using PEBP4 Rabbit pAb (A17961) at dilution of 1:100 (40x lens). Perform microwave antigen retrieval with 10 mM PBS buffer pH 7.2 before commencing with IHC staining protocol.



Immunohistochemistry analysis of paraffin-embedded Human colon carcinoma using PEBP4 Rabbit pAb (A17961) at dilution of 1:100 (40x lens). Perform microwave antigen retrieval with 10 mM PBS buffer pH 7.2 before commencing with IHC staining protocol.



Immunofluorescence analysis of L929 cells using PEBP4 Rabbit pAb (A17961) at dilution of 1:100. Secondary antibody: Cy3 Goat Anti-Rabbit IgG (H+L) (AS007) at 1:500 dilution. Blue: DAPI for nuclear staining.