

A17867

Leader in Biomolecular Solutions for Life Science



SMC2 Rabbit pAb

Catalog No.: A17867

1 Publications

Basic Information

Observed MW

135kDa

Calculated MW

136kDa

Category

Polyclonal Antibody

Applications

WB,ELISA

Cross-Reactivity

Human,Mouse

Background

Predicted to enable ATP binding activity; chromatin binding activity; and single-stranded DNA binding activity. Involved in mitotic chromosome condensation. Located in condensed chromosome; cytoplasm; and nuclear lumen. Part of condensin complex.

Recommended Dilutions

WB 1:500 - 1:2000

ELISA Recommended starting concentration is 1 µg/mL. Please optimize the concentration based on your specific assay requirements.

Immunogen Information

Gene ID

10592

Swiss Prot

O95347

Immunogen

Recombinant protein (or fragment). This information is considered to be commercially sensitive.

Synonyms

CAPE; CAP-E; SMC-2; SMC2L1; SMC2

Contact



www.abclonal.com

Product Information

Source

Rabbit

Isotype

IgG

Purification

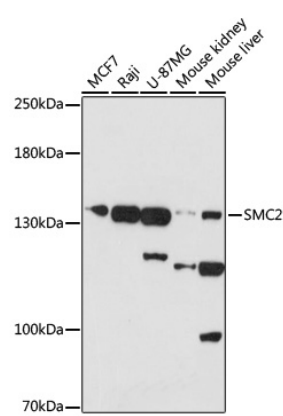
Affinity purification

Storage

Store at -20°C. Avoid freeze / thaw cycles.

Buffer: PBS with 0.01% thimerosal, 50% glycerol, pH7.3.

Validation Data



Western blot analysis of various lysates using SMC2 Rabbit pAb (A17867) at 1:1000 dilution.
Secondary antibody: HRP-conjugated Goat anti-Rabbit IgG (H+L) (AS014) at 1:10000 dilution.
Lysates/proteins: 25µg per lane.
Blocking buffer: 3% nonfat dry milk in TBST.
Detection: ECL Basic Kit (RM00020).
Exposure time: 30s.