

A17853

Leader in Biomolecular Solutions for Life Science



VWC2L Rabbit pAb

Catalog No.: A17853

Basic Information

Observed MW

23kDa

Calculated MW

25kDa

Category

Polyclonal Antibody

Applications

WB, ELISA

Cross-Reactivity

Human, Mouse

Background

Acts upstream of or within negative regulation of BMP signaling pathway and positive regulation of neuron differentiation. Located in extracellular space. Part of AMPA glutamate receptor complex. Is expressed in brain; central nervous system; hippocampus; hypothalamus; and thalamus. Orthologous to human VWC2L (von Willebrand factor C domain containing 2 like).

Recommended Dilutions

WB 1:500 - 1:2000

ELISA Recommended starting concentration is 1 µg/mL. Please optimize the concentration based on your specific assay requirements.

Immunogen Information

Gene ID

320460

Swiss Prot

Q505H4

Immunogen

Synthetic peptide. This information is considered to be commercially sensitive.

Synonyms

Brl; A830006F12Rik; VWC2L

Contact



www.abclonal.com

Product Information

Source

Rabbit

Isotype

IgG

Purification

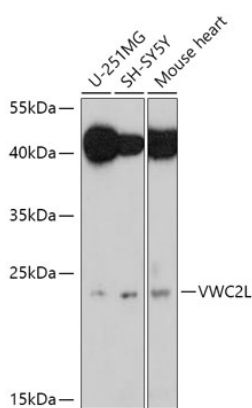
Affinity purification

Storage

Store at -20°C. Avoid freeze / thaw cycles.

Buffer: PBS with 0.01% thimerosal, 50% glycerol, pH 7.3.

Validation Data



Western blot analysis of various lysates using VWC2L Rabbit pAb (A17853) at 1:1000 dilution.

Secondary antibody: HRP-conjugated Goat anti-Rabbit IgG (H+L) (AS014) at 1:10000 dilution.

Lysates/proteins: 25µg per lane.

Blocking buffer: 3% nonfat dry milk in TBST.

Detection: ECL Basic Kit (RM00020).

Exposure time: 90s.