

A17842

Leader in Biomolecular Solutions for Life Science



# APLF Rabbit pAb

Catalog No.: A17842

## Basic Information

---

### Observed MW

57kDa

### Calculated MW

57kDa

### Category

Polyclonal Antibody

### Applications

WB,ELISA

### Cross-Reactivity

Rat

## Background

---

Enables DNA-(apurinic or apyrimidinic site) endonuclease activity; nuclease activity; and nucleotide binding activity. Involved in double-strand break repair via nonhomologous end joining and single strand break repair. Acts upstream of or within positive regulation of DNA ligation. Located in nucleoplasm. Is active in site of double-strand break.

## Recommended Dilutions

---

WB 1:500 - 1:2000

## Immunogen Information

---

### Gene ID

200558

### Swiss Prot

Q8IW19

### Immunogen

Recombinant fusion protein containing a sequence corresponding to amino acids 200-380 of human APLF (NP\_775816.1).

### Synonyms

APFL; PALF; Xip1; ZCCHH1; C2orf13; APLF

## Contact

---



[www.abclonal.com](http://www.abclonal.com)

## Product Information

---

### Source

Rabbit

### Isotype

IgG

### Purification

Affinity purification

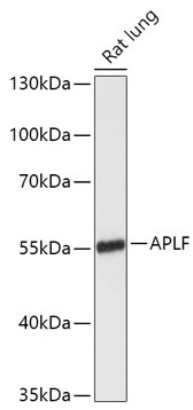
### Storage

Store at -20°C. Avoid freeze / thaw cycles.

Buffer: PBS with 0.01% thimerosal, 50% glycerol, pH 7.3.

## Validation Data

---



Western blot analysis of lysates from Rat lung, using APLF Rabbit pAb (A17842) at 1:1000 dilution.

Secondary antibody: HRP Goat Anti-Rabbit IgG (H+L) (AS014) at 1:10000 dilution.

Lysates/proteins: 25µg per lane.

Blocking buffer: 3% nonfat dry milk in TBST.

Detection: ECL Enhanced Kit (RM00021).

Exposure time: 3min.