

A17826

Leader in Biomolecular Solutions for Life Science



CLVS2 Rabbit pAb

Catalog No.: A17826

Basic Information

Observed MW

38kDa

Calculated MW

38kDa

Category

Polyclonal Antibody

Applications

WB,ELISA

Cross-Reactivity

Human

Background

This gene encodes a protein that belongs to the SEC14/CRAL-TRIO family of proteins. A similar protein in rat is thought to function in the endosomal pathway between early endosomes and mature lysosomes.

Recommended Dilutions

WB 1:500 - 1:2000

ELISA Recommended starting concentration is 1 µg/mL. Please optimize the concentration based on your specific assay requirements.

Immunogen Information

Gene ID

134829

Swiss Prot

Q5SYC1

Immunogen

Recombinant protein (or fragment). This information is considered to be commercially sensitive.

Synonyms

RLBP1L2; C6orf212; C6orf213; bA160A10.4; CLVS2

Contact

 www.abclonal.com

Product Information

Source

Rabbit

Isotype

IgG

Purification

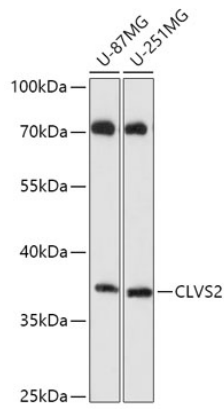
Affinity purification

Storage

Store at -20°C. Avoid freeze / thaw cycles.

Buffer: PBS with 0.01% thimerosal, 50% glycerol, pH7.3.

Validation Data



Western blot analysis of various lysates using CLVS2 Rabbit pAb (A17826) at 1:1000 dilution.
Secondary antibody: HRP-conjugated Goat anti-Rabbit IgG (H+L) (AS014) at 1:10000 dilution.
Lysates/proteins: 25µg per lane.
Blocking buffer: 3% nonfat dry milk in TBST.
Detection: ECL Basic Kit (RM00020).
Exposure time: 90s.