

A17815

Leader in Biomolecular Solutions for Life Science



TUBGCP5 Rabbit pAb

Catalog No.: A17815

Basic Information

Observed MW

118kDa

Calculated MW

118kDa

Category

Polyclonal Antibody

Applications

WB,ELISA

Cross-Reactivity

Rat

Background

Enables microtubule binding activity. Involved in microtubule nucleation. Located in centrosome and cytosol. Part of gamma-tubulin large complex.

Recommended Dilutions

WB 1:500 - 1:2000

ELISA Recommended starting concentration is 1 µg/mL. Please optimize the concentration based on your specific assay requirements.

Immunogen Information

Gene ID

114791

Swiss Prot

Q96RT8

Immunogen

Synthetic peptide. This information is considered to be commercially sensitive.

Synonyms

GCP5; TUBGCP5

Contact

 www.abclonal.com

Product Information

Source

Rabbit

Isotype

IgG

Purification

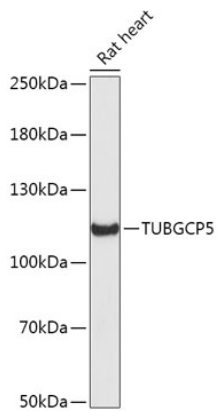
Affinity purification

Storage

Store at -20°C. Avoid freeze / thaw cycles.

Buffer: PBS with 0.01% thimerosal, 50% glycerol, pH7.3.

Validation Data



Western blot analysis of lysates from Rat heart, using TUBGCP5 Rabbit pAb (A17815) at 1:1000 dilution.

Secondary antibody: HRP-conjugated Goat anti-Rabbit IgG (H+L) (AS014) at 1:10000 dilution.

Lysates/proteins: 25µg per lane.

Blocking buffer: 3% nonfat dry milk in TBST.

Detection: ECL Enhanced Kit (RM00021).

Exposure time: 90s.