

A17802

Leader in Biomolecular Solutions for Life Science



N4BP2L1 Rabbit pAb

Catalog No.: A17802

Basic Information

Observed MW

29kDa

Calculated MW

29kDa

Category

Polyclonal Antibody

Applications

WB,ELISA

Cross-Reactivity

Mouse

Background

N4BP2L1 (NEDD4 Binding Protein 2 Like 1) is a Protein Coding gene. Diseases associated with N4BP2L1 include Inflammatory Leiomyosarcoma. Gene Ontology (GO) annotations related to this gene include kinase activity. An important paralog of this gene is N4BP2.

Recommended Dilutions

WB 1:500 - 1:2000

ELISA Recommended starting concentration is 1 µg/mL. Please optimize the concentration based on your specific assay requirements.

Immunogen Information

Gene ID

90634

Swiss Prot

Q5TBK1

Immunogen

Recombinant protein (or fragment). This information is considered to be commercially sensitive.

Synonyms

CG018; N4BP2L1

Contact

 www.abclonal.com

Product Information

Source

Rabbit

Isotype

IgG

Purification

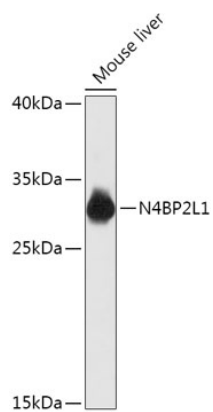
Affinity purification

Storage

Store at -20°C. Avoid freeze / thaw cycles.

Buffer: PBS with 0.01% thimerosal, 50% glycerol, pH7.3.

Validation Data



Western blot analysis of lysates from Mouse liver, using N4BP2L1 Rabbit pAb (A17802) at 1:1000 dilution.

Secondary antibody: HRP-conjugated Goat anti-Rabbit IgG (H+L) (AS014) at 1:10000 dilution.

Lysates/proteins: 25µg per lane.

Blocking buffer: 3% nonfat dry milk in TBST.

Detection: ECL Basic Kit (RM00020).

Exposure time: 60s.