

A17779

Leader in Biomolecular Solutions for Life Science



Tubulin beta-1 chain Rabbit pAb

Catalog No.: A17779

Basic Information

Observed MW

50kDa

Calculated MW

50kDa

Category

Polyclonal Antibody

Applications

WB,ELISA

Cross-Reactivity

Mouse

Background

This gene encodes a member of the beta tubulin protein family. Beta tubulins are one of two core protein families (alpha and beta tubulins) that heterodimerize and assemble to form microtubules. This protein is specifically expressed in platelets and megakaryocytes and may be involved in proplatelet production and platelet release. A mutations in this gene is associated with autosomal dominant macrothrombocytopenia. Two pseudogenes of this gene are found on chromosome Y.

Recommended Dilutions

WB 1:500 - 1:2000

ELISA Recommended starting concentration is 1 µg/mL. Please optimize the concentration based on your specific assay requirements.

Immunogen Information

Gene ID

81027

Swiss Prot

Q9H4B7

Immunogen

Recombinant protein (or fragment). This information is considered to be commercially sensitive.

Synonyms

MACTHC1; Tubulin beta-1 chain

Contact

 www.abclonal.com

Product Information

Source

Rabbit

Isotype

IgG

Purification

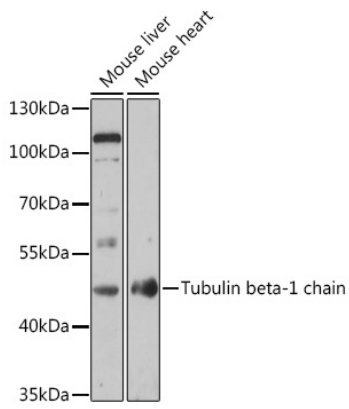
Affinity purification

Storage

Store at -20°C. Avoid freeze / thaw cycles.

Buffer: PBS with 0.01% thimerosal, 50% glycerol, pH7.3.

Validation Data



Western blot analysis of various lysates using Tubulin beta-1 chain Rabbit pAb (A17779) at 1:1000 dilution.

Secondary antibody: HRP-conjugated Goat anti-Rabbit IgG (H+L) (AS014) at 1:10000 dilution.

Lysates/proteins: 25µg per lane.

Blocking buffer: 3% nonfat dry milk in TBST.

Detection: ECL Basic Kit (RM00020).

Exposure time: 180s.